

Changed Nov 11, 2025 17:17

Reviewed Nov 11, 2025 17:17

Erudus ID 0899de2dd43e44b588699ca189695de9

Version 1.0

Status Published



Fresh Artisan Crottin 2x6x60g

Ribblesdale Fresh Artisan Crottin 2x360g

PRODUCT DESCRIPTION

A small, handcrafted British Goat's Cheese inspired by the traditional French Crottin.

Brand	Carron Lodge Ltd.
Manufacturer Product Code	CROTTIN
Product Type	Food
Product Category	Sheep & Goats Cheese
Storage Type	Chilled
Erudus ID	0899de2dd43e44b588699ca189695de9
Specification Type	Cheese

Inner Component GTIN	5056114212629
Outer Case GTIN	15056114212626



INGREDIENTS

Ingredient Declaration

Pasteurised Goats **MILK** , Salt, Cultures, Vegetarian Rennet, Preservative: Potassium Sorbate E202

ALLERGENS

Product Contains:

Celery/Celeriac	No	Mustard	No
Cereals Containing Gluten	No	Nuts (Tree)	No
Barley	No	Almond nuts	No
Oats	No	Brazil nuts	No
Rye	No	Cashew nuts	No
Wheat (including Spelt and Khorasan)	No	Hazelnuts	No
Crustacea	No	Macadamia (Queensland) nuts	No
Eggs	No	Pecan nuts	No
Fish	No	Pistachio nuts	No
Lupin	No	Walnuts	No
Milk	Yes	Peanuts	No
Molluscs	No	Sesame Seeds	No
		Soybeans	No
		Sulphur Dioxide and Sulphites	No

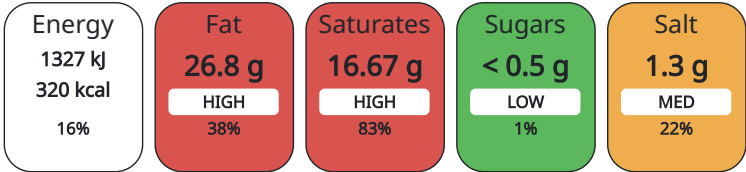
SUPPLEMENTARY INGREDIENT INFORMATION ADDITIVES

GM Protein/DNA	No
----------------	----

Product Contains:

DIET SUITABILITY	Vegetarian Diet	Suitable for
------------------	-----------------	--------------

Each 100g/ml portion contains:



of your reference intake.

Typical values per 100g/ml : Energy 320kcal / 1327kj

Nutrient	per 100g	RI per 100g	per 60g serving	RI per 60g serving
Energy (kj)	1327 kj	16%	796.2 kj	9%
Energy (kcal)	320 kcal	16%	192 kcal	10%
Fat	26.8 g	38%	16.08 g	23%
of which Saturates	16.67 g	83%	10 g	50%
Carbohydrate	3 g	1%	1.8 g	1%
of which Sugars	< 0.5 g	1%	0.3 g	0%
Protein	16.7 g	33%	10.02 g	20%
Salt	1.3 g	22%	0.78 g	13%

Serving Size60 g

Directions For Use

Ready to eat.

Storage Instructions

Keep refrigerated 2°c - 5°c.

Storage Instructions After Opening

Use within 3 days.

Shelf Life from Time of Production30 Days

BRCGS CertifiedBRCGS Start!
SALSA (Safe & Local Supplier Approval)

Product Country of OriginUnited Kingdom

Origin of the Primary IngredientNot Applicable

Standards Testing
Do you undertake trend analysis of microbiological results?Yes

Microbiological Standards

Organism	Description	Frequency	Target	Maximum	Sample (g or ml)
Staphylococcus Aureus (cfu/g or ml)		Every Batch	<20	100	25
Coliforms (cfu/g or ml)		Every Batch	<1000	10000	25
E. Coli (cfu/g or ml)		Every Batch	<10	100	25
Listeria Monocytogenes (cfu/g or ml)		Every Batch	=0	0	25
Salmonella (cfu/g or ml)		Occasionally	=0	0	25

CONFIGURATION	Case Configuration		Inner Pack Configuration	
PRODUCT WEIGHTS	Total Quantity of Inner Components in Outer Case		2 Units	
	Is the Outer Case Splittable?		Yes	
	Inner Component			
	Variable Weight Consumer Item		No	
	Inner Component Weight		360 g	
	Outer Case			
PRODUCT DIMENSIONS	Outer Case Gross Weight		0.73 kg	
	Outer Case Net Weight		0.64 kg	
	Inner Component			
	Inner Component Depth		180 mm	
	Inner Component Width		130 mm	
	Inner Component Height		50 mm	
PALLET INFORMATION	Outer Case			
	Outer Case Depth		280 mm	
	Outer Case Width		190 mm	
	Outer Case Height		60 mm	
	Non Palletised		Yes	
OTHER INFORMATION CONTACT INFORMATION	Address			
	Carron Lodge Ltd. Park Head Farm, Carron Lane Inglewhite Preston Lancashire PR3 2LN United Kingdom			
	P: (Phone) 01995 640352			

The information on the [Erudus System](#) has been supplied by the manufacturers of the products and, whilst the owners of the Erudus System take steps to ensure the information is regularly updated, they give no warranty and no guarantee that the information is accurate. Product information and ingredients may change, please always read product labels carefully in addition to using the information provided by Erudus.

We do not accept liability for any inaccuracies or incorrect information contained on this site.
Please visit <http://www.erudus.com/terms-and-conditions> for full terms and conditions.