

15100

Cooked Gammon Ham 500g

Cooked Gammon Ham 15x500g

PRODUCT DESCRIPTION

Boneless gammon ham

Brand	Kings Fine Cooked Meats
Manufacturer Product Code	NGAMPT500
Product Type	Food
Product Category	Bacon & Gammon
Storage Type	Chilled
Erudus ID	f2c9f449285a4e4a8fb3deb040cf6ccb
Specification Type	Meat

Inner Component GTIN	5060388580001
Inner Pack GTIN	5060388580001
Outer Case GTIN	05060388580001

INGREDIENTS

Ingredient Declaration
Pork (100g of Pork per 100g of finished product), Water, Salt, Modified Waxy Maize Starch, Emulsifier (E451), Antioxidant (E301), Preservative (E250)

ALLERGENS

Product Contains:

Celery/Celeriac	No
Cereals Containing Gluten	No
Barley	No
Oats	No
Rye	No
Wheat (including Spelt and Khorasan)	No
Crustacea	No
Eggs	No
Fish	No
Lupin	No
Milk	No
Molluscs	No

Mustard	No
Nuts (Tree)	No
Almond nuts	No
Brazil nuts	No
Cashew nuts	No
Hazelnuts	No
Macadamia (Queensland) nuts	No
Pecan nuts	No
Pistachio nuts	No
Walnuts	No
Peanuts	No
Sesame Seeds	No
Soybeans	No
Sulphur Dioxide and Sulphites	No

SUPPLEMENTARY INGREDIENT INFORMATION

Palm Oil	No
Hydrogenated Vegetable Oil/Fat	No
GM Protein/DNA	No

ADDITIVES

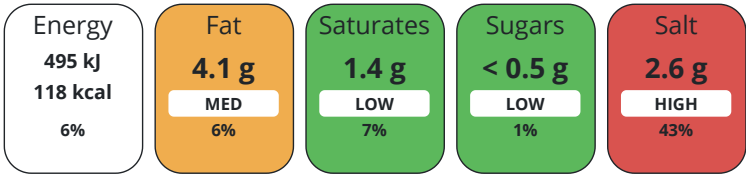
Product Contains:

Artificial Antioxidants	Yes	Artificial Flavourings	No
Artificial Colours	No	Artificial Preservatives	Yes
Artificial Flavour Enhancers	No	Artificial Sweeteners	No
Halal Diet	No	Kosher Diet	No

DIET SUITABILITY

NUTRITIONAL
INFORMATION AS
SOLD

Each 100g/ml portion contains:



of your reference intake.

Typical values per 100g/ml : Energy 118kcal / 495kJ

Nutrient	per 100g	RI per 100g	per 50g serving	RI per 50g serving
Energy (kJ)	495 kJ	6%	247.5	3%
Energy (kcal)	118 kcal	6%	59	3%
Fat	4.1 g	6%	2.05 g	3%
of which Saturates	1.4 g	7%	0.7 g	4%
Carbohydrate	0.5 g	0%	0.25 g	0%
of which Sugars	< 0.5 g	1%	0.25 g	0%
Fibre	< 0.5 g		0.25 g	
Protein	17.7 g	35%	8.85 g	18%
Salt	2.6 g	43%	1.3 g	22%

Serving Size	50 g
Number of Servings	10 Servings

Source of Nutritional Information Manufacturers analysis

Cholesterol per 100 g/ml (UK/FR)	0 g
Trans Fats per 100 g/ml	0 g
Fat Percentage in Dry Matter per 100 g/ml	0 %
Non Milk Extrinsic Sugars per 100 g/ml	0 g

SUPPLEMENTARY
NUTRITIONAL
INFORMATION

HFSS Status Not Applicable (out of scope, exempt)

Directions For Use

Product is ready to eat. For sliced; remove the product from packaging before consuming. For joints; remove the product from packaging and cut to desired size before consuming.

Storage Instructions

Keep refrigerated at 0-5°C. Use within 3 days of opening.

Storage Instructions After Opening

Keep refrigerated at 0-5°C. Use within 3 days of opening.

Shelf Life from Time of Production	25 Days
Shelf Life From Opening	3 Days

HFSS (HIGH IN
FAT, SALT AND
SUGAR)
HANDLING &
STORAGE
INFORMATION

ACCREDITATIONS/ CERTIFICATIONS/ ASSURANCE SCHEMES ORIGIN	BRCGS Certified				
	Product Country of Origin		Spain		
	Additional Origin Details				
PRODUCT CHARACTERISTICS	EU				
	Origin of the Primary Ingredient				
	Standards Testing				
	Do you undertake trend analysis of microbiological results?		Yes	Is shelf life testing undertaken?	Yes
	ORGANOLEPTICS				
	Appearance				
	Deep pink with no bruising or marbling				
	Aroma				
	Fresh, clean, meaty aroma				
	Taste				
Rich pork flavour, slightly sweet and salty					
Texture					
Tender, easy to chew, internal moisture on chewing					
CONFIGURATION	HAZARD CONTROLS				
	Metal Detection		Yes		
	Case Configuration		Inner Pack Configuration		
	Total Quantity of Inner Components in Outer Case		15 Units	Is Inner Pack Splittable?	No
	Total Quantity of Inner Packs in Outer Case		15 Units		
	Is the Outer Case Splittable?		Yes		
PRODUCT WEIGHTS	Inner Component		Inner Pack		
	Variable Weight Consumer Item		No	Inner Pack Gross Weight	524 g
	Inner Component Weight		500 g	Inner Pack Net Weight	500 g
	Net Drained Weight		500 g		
	e mark		Yes		
	Outer Case				
PRODUCT DIMENSIONS	Outer Case Gross Weight		7.92 kg		
	Outer Case Net Weight		7.5 kg		
	Inner Component		Inner Pack		
	Inner Component Depth		230 mm	Inner Pack Depth	239 mm
	Inner Component Width		160 mm	Inner Pack Width	166 mm
	Inner Component Height		32 mm	Inner Pack Height	37 mm
PALLET INFORMATION	Outer Case				
	Outer Case Depth		385 mm		
	Outer Case Width		320 mm		
	Outer Case Height		200 mm		
	Quantity of Cases Per Pallet Layer		9 Cases	Pallet Height	1.86 MTR
	Quantity of Layers Per Pallet		8 Layers	Pallet Gross Weight	540 kg
Quantity of Cases Per Pallet		72 Cases			

PACKAGING

Inner Pack Packaging

Type	Materials	Weight	Recycled Plastic %	Recyclable	Returnable	Composite
Tray	Plastic	24 g	- %	No	No	

Outer Case Packaging

Type	Materials	Weight	Recycled Plastic %	Recyclable	Returnable	Composite
Case	Paper/Cardboard	420 g	- %	Yes	No	

Transport Packaging

Type	Materials	Weight	Recycled Plastic %	Recyclable	Returnable	Composite
Pallet	Wood	25000 g	- %	No	Yes	
Pallet Wrap	Plastic	325 g	- %	No	No	

SAFETY &
WARNINGS

OTHER
INFORMATION

Identification/Health Marks	United Kingdom WG 025
-----------------------------	--------------------------

CONTACT
INFORMATION

Address
Kings Fine Cooked Meats
69 Queens Street
Wigan
Lancashire
WN3 4HW
United Kingdom

P: (Phone) 01942322398

The information on the [Erudus System](#) has been supplied by the manufacturers of the products and, whilst the owners of the Erudus System take steps to ensure the information is regularly updated, they give no warranty and no guarantee that the information is accurate. Product information and ingredients may change, please always read product labels carefully in addition to using the information provided by Erudus.

We do not accept liability for any inaccuracies or incorrect information contained on this site.
Please visit <http://www.erudus.com/terms-and-conditions> for full terms and conditions.