

Changed Aug 30, 2024 11:37

Reviewed Aug 30, 2024 11:37

Erudus ID 1624b9dec9c64034adff6c4dc0877fe7

Version 3.0

Status Published

CAT21009

PHILADELPHIA CREAM CHEESE PLAIN 1.65KG 4CA

Philadelphia Cream Cheese Plain 1.65kg

PRODUCT DESCRIPTION

PHILADELPHIA CREAM CHEESE-SOFT PLAIN 1.65KG

Brand	Mondelez UK Ltd
Manufacturer Product Code	52638
Product Type	Food
Product Category	Other
Storage Type	Chilled
Erudus ID	1624b9dec9c64034adff6c4dc0877fe7
Specification Type	Generic



Inner Component GTIN	5000224026386
Outer Case GTIN	5000224126383



INGREDIENTS

Ingredient Declaration

Full fat soft CHEESE, salt, stabiliser (guar gum), acid (citric acid).

ALLERGENS

Product Contains:

Celery/Celeriac	No
Cereals Containing Gluten	No
Barley	No
Oats	No
Rye	No
Wheat (including Spelt and Khorasan)	No
Crustacea	No
Eggs	No
Fish	No
Lupin	No
Milk	Yes
Molluscs	No

Mustard	No
Nuts (Tree)	No
Almond nuts	No
Brazil nuts	No
Cashew nuts	No
Hazelnuts	No
Macadamia (Queensland) nuts	No
Pecan nuts	No
Pistachio nuts	No
Walnuts	No
Peanuts	No
Sesame Seeds	No
Soybeans	No
Sulphur Dioxide and Sulphites	No

SUPPLEMENTARY
INGREDIENT
INFORMATION

Palm Oil	No
Hydrogenated Vegetable Oil/Fat	No
GM Protein/DNA	No

ADDITIVES

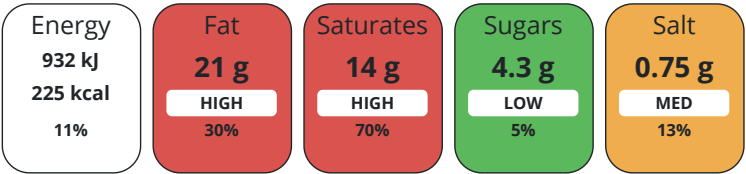
Product Contains:

DIET SUITABILITY

Vegan Diet	No	Vegetarian Diet	Suitable for
Halal Diet	No	Kosher Diet	No

NUTRITIONAL
INFORMATION AS
SOLD

Each 100g/ml portion contains:



of your reference intake.

Typical values per 100g/ml : Energy 225kcal / 932kJ

Nutrient	per 100g	RI per 100g
Energy (kJ)	932 kJ	11%
Energy (kcal)	225 kcal	11%
Fat	21 g	30%
of which Saturates	14 g	70%
Carbohydrate	4.3 g	2%
of which Sugars	4.3 g	5%
Fibre	0.2 g	
Protein	5.4 g	11%
Salt	0.75 g	13%

SUPPLEMENTARY
NUTRITIONAL
INFORMATION

HANDLING &
STORAGE
INFORMATION

Directions For Use

Ready To Eat

Storage Instructions

KEEP REFRIGERATED

Shelf Life from Time of Production	120 Days
Shelf Life From Opening	5 Days

ORIGIN

Product Country of Origin	Germany
Origin of the Primary Ingredient	

PRODUCT
CHARACTERISTICS

Standards Testing			
Do you undertake trend analysis of microbiological results?	No	Is shelf life testing undertaken?	No

CONFIGURATION

Case Configuration	Inner Pack Configuration
Total Quantity of Inner Components in Outer Case	4 Units
Is the Outer Case Splittable?	No

PRODUCT WEIGHTS	Inner Component						
	Variable Weight Consumer Item		Yes				
	Outer Case						
	Outer Case Gross Weight		7.24 kg				
PRODUCT DIMENSIONS	Outer Case Net Weight		6.6 kg				
	Inner Component						
	Inner Component Depth		105 mm				
	Inner Component Width		185 mm				
PALLET INFORMATION	Inner Component Height		205 mm				
	Outer Case						
	Outer Case Depth		399 mm				
	Outer Case Width		189 mm				
PACKAGING	Outer Case Height		210 mm				
	Quantity of Cases Per Pallet Layer		15 Cases		Pallet Type		Euro Pallet
	Quantity of Layers Per Pallet		6 Layers		Pallet Height		1.49 MTR
	Quantity of Cases Per Pallet		90 Cases		Pallet Gross Weight		655.74 kg
SAFETY & WARNINGS	Inner Component Packaging						
	Type	Materials	Weight	Recycled Plastic %	Recyclable	Returnable	Composite
	Tub	Plastic	344 g	- %			
	Tub	Aluminium	14.8 g	- %			
	Outer Case Packaging						
	Type	Materials	Weight	Recycled Plastic %	Recyclable	Returnable	Composite
	Case	Plastic	3.25 g	- %			
	Case	Paper/Cardboard	279 g	- %			
	OTHER INFORMATION						
	Address			Technical Contact			
Mondelez UK Ltd			Tomas Sakalik				
PO Box 12			Publication Expert				
Bournville Lane			tomas.sakalik@mdlz.com				
Bournville							
Birmingham							
B30 2LU							
England							
P: (Phone) +44 1214 582 000							

The information on the [Erudus System](#) has been supplied by the manufacturers of the products and, whilst the owners of the Erudus System take steps to ensure the information is regularly updated, they give no warranty and no guarantee that the information is accurate. Product information and ingredients may change, please always read product labels carefully in addition to using the information provided by Erudus.

We do not accept liability for any inaccuracies or incorrect information contained on this site.
Please visit <http://www.erudus.com/terms-and-conditions> for full terms and conditions.