

27800

Endeavour Wholetail Scampi Tails in Breadcrumbs 10*450g

Endeavour Wholetail Scampi 10x450g

PRODUCT DESCRIPTION

Whole scampi tails freshly selected and coated in a delicious crumb. in breadcrumbs with added water. Contains one or more tails per piece.

Brand	Whitby Seafoods Ltd
Manufacturer Product	1602
Code	
Product Type	Food
Product Category	Prawns, Shrimp & Scampi
Storage Type	Frozen
Erudus ID	234f14c8ec19468db4abb1dc3247abd6
Specification Type	Fish and Seafood
Inner Component GTIN	5016316016029
Outer Case GTIN	05016316916022



INGREDIENTS

Ingredient Declaration
Scampi (**CRUSTACEANS**)(37%), Breadcrumbs (**WHEAT** Flour (**WHEAT** Flour, Calcium Carbonate, Iron, Niacin, Thiamin), Rapeseed oil, Yeast, Salt), Batter (Water, **WHEAT** Flour (**WHEAT** Flour, Calcium Carbonate, Iron, Niacin, Thiamin), Salt), Water, Stabilisers: E450, E451, E452.

ALLERGENS

Product Contains:

Celery/Celeriac	No
Cereals Containing Gluten	Yes
Barley	No
Oats	No
Rye	No
Wheat (including Spelt and Khorasan)	Yes
Crustacea	Yes
Eggs	No
Fish	May Contain
Lupin	No
Milk	No
Molluscs	May Contain

Risk Source:

Fish (Risk Source)	Factory
--------------------	---------

Mustard	No
Nuts (Tree)	No
Almond nuts	No
Brazil nuts	No
Cashew nuts	No
Hazelnuts	No
Macadamia (Queensland) nuts	No
Pecan nuts	No
Pistachio nuts	No
Walnuts	No
Peanuts	No
Sesame Seeds	No
Soybeans	No
Sulphur Dioxide and Sulphites	No

Molluscs (Risk Source)	Factory
------------------------	---------

SUPPLEMENTARY
INGREDIENT
INFORMATION

ADDITIVES

DIET SUITABILITY

NUTRITIONAL
INFORMATION AS
SOLD

SUPPLEMENTARY
NUTRITIONAL
INFORMATION

HANDLING &
STORAGE
INFORMATION

ACCREDITATIONS/
CERTIFICATIONS/
ASSURANCE
SCHEMES

Allergen Statement On Pack

For allergens including cereals containing GLUTEN please see ingredients in CAPITALS. May contain FISH and MOLLUSCS

Additional Allergen Information

For allergens including cereals containing GLUTEN please see ingredients in CAPITALS. May contain FISH and MOLLUSCS

Palm Oil	No
Hydrogenated Vegetable Oil/Fat	No
GM Protein/DNA	No

Product Contains:

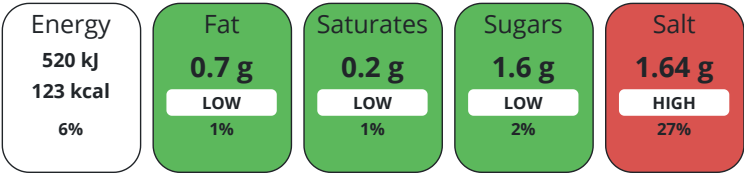
Artificial Antioxidants	No
Artificial Colours	No
Artificial Flavour Enhancers	No

Artificial Flavourings	No
Artificial Preservatives	No
Artificial Sweeteners	No

Halal Diet	No
------------	----

Kosher Diet	No
-------------	----

Each 100g/ml portion contains:



of your reference intake.

Typical values per 100g/ml : Energy 123kcal / 520kJ

Nutrient	per 100g	RI per 100g
Energy (kJ)	520 kJ	6%
Energy (kcal)	123 kcal	6%
Fat	0.7 g	1%
of which Saturates	0.2 g	1%
Carbohydrate	21.6 g	8%
of which Sugars	1.6 g	2%
Protein	8.8 g	18%
Salt	1.64 g	27%

Source of Nutritional Information Manufacturers analysis

Directions For Use

Cooking instructions : Deep fry from frozen. Pre-heat oil to 180°C / 350°F. Cook for approximately 4 minutes until crisp and golden brown

Storage Instructions

Store at -18°C or colder until the best before date

Shelf Life from Time of Production	547 Days
------------------------------------	----------

BRCGS Certified

Other Accreditation

ORIGIN	Product Country of Origin		United Kingdom						
	Additional Origin Details								
	Scampi: Approved suppliers sourced from North Sea / Irish Sea Breadcrumbs: Newlyweds Water: Whitby Seafoods Filtered Borehole Water Batter: Newlyweds Stabiliser: Fibrosol								
	Origin of the Primary Ingredient								
PRODUCT CHARACTERISTICS	Catch Zone		27 - Atlantic, Northeast						
	Standards Testing								
	Do you undertake trend analysis of microbiological results?		No		Is shelf life testing undertaken?			No	
	Microbiological Standards								
	Organism		Description	Frequency	Target	Maximum	Sample (g or ml)		
	Salmonella (cfu/g or ml)			Annually	<0	0	25		
	E. Coli (cfu/g or ml)			Annually	<10	10	1		
	Coagulase-positive Staphylococci (cfu/g or ml)			Annually	<10	100	1		
	HAZARD CONTROLS								
	CONFIGURATION	Metal Detection		Yes					
Case Configuration		Inner Pack Configuration							
Variable Inner Components in Outer Case		No							
Total Quantity of Inner Components in Outer Case		10 Units							
Is the Outer Case Splittable?		No							
PRODUCT WEIGHTS	Inner Component								
	Variable Weight Consumer Item		No						
	Inner Component Weight		450 g						
	Outer Case								
	Outer Case Gross Weight		4.8 kg						
	Outer Case Net Weight		4.5 kg						
PRODUCT DIMENSIONS	Inner Component								
	Inner Component Depth		280 mm						
	Inner Component Width		190 mm						
	Inner Component Height		30 mm						
	Outer Case								
	Outer Case Depth		395 mm						
	Outer Case Width		295 mm						
PALLET INFORMATION	Outer Case Height		108 mm						
	Quantity of Cases Per Pallet Layer		10 Cases		Pallet Height		1.79 MTR		
	Quantity of Layers Per Pallet		15 Layers		Pallet Gross Weight		745.15 kg		
	Quantity of Cases Per Pallet		150 Cases						
PACKAGING	Inner Component Packaging								
	Type	Materials		Weight	Recycled Plastic %	Recyclable	Returnable	Composite	
	Bag	Plastic		8 g	- %				

SAFETY &
WARNINGS

OTHER
INFORMATION

CONTACT
INFORMATION

Outer Case Packaging

Type	Materials	Weight	Recycled Plastic %	Recyclable	Returnable	Composite
Case	Paper/Cardboard	211 g	- %			

Transport Packaging

Type	Materials	Weight	Recycled Plastic %	Recyclable	Returnable	Composite
Other	Plastic	115 g	- %		Yes	

Intrastat/Taric Code	1605400020	Identification/Health Marks	GB YK 006
----------------------	------------	-----------------------------	-----------

Manufacturer Comments

Customers order day 1, deliveries will be made on day 3. Amount in Bag; 28 (+/- 4)

Address

Whitby Seafoods Ltd
Fairfield way
Whitby Business park
Whitby
North Yorkshire
YO22 4PU
England

Technical Contact

Neve Saltmarsh
Technical Services Coordinator
neve.saltmarsh@whitby-seafoods.com

P: (Phone) 01947 606101

Complaints Contact

Neve Saltmarsh
Technical Services Coordinator
neve.saltmarsh@whitby-seafoods.com

The information on the [Erudus System](#) has been supplied by the manufacturers of the products and, whilst the owners of the Erudus System take steps to ensure the information is regularly updated, they give no warranty and no guarantee that the information is accurate. Product information and ingredients may change, please always read product labels carefully in addition to using the information provided by Erudus.

We do not accept liability for any inaccuracies or incorrect information contained on this site.
Please visit <http://www.erudus.com/terms-and-conditions> for full terms and conditions.