

31621

# MINI DANISH MIX

Mini Danish Mix

## PRODUCT DESCRIPTION

Assortment of 5 pre-proved Mini Danish Pastries: 20 Maple Pecan Plaits, 20 Apple lattices , 30 Mini Cinnamon Swirls, 20 Mini Custard Crowns and 20 Mini Raspberry crowns.

|                      |                                  |
|----------------------|----------------------------------|
| Brand                | La Lorraine UK Ltd               |
| Manufacturer Product | 5000929                          |
| Code                 |                                  |
| Product Type         | Food                             |
| Product Category     | Bakery - General                 |
| Storage Type         | Frozen                           |
| Erudus ID            | 23e432c5fbe1420bb2d8c46b537398c7 |
| Specification Type   | Legacy                           |



Outer Case GTIN

5412632509298



## INGREDIENTS

### Ingredient Declaration

mini custard crown (water, **WHEAT** flour, palm oil, sugar, rapeseed oil, modified starch, whey powder (**MILK**), yeast, **EGG** yolk, apricot kernels, coconut oil, consistency agent (isomalt), salt, emulsifiers (mono- and diglycerides of fatty acids, mono- and diacetyl tartaric acid esters of mono- and diglycerides of fatty acids), colours (calcium carbonates, carotenes), whole **MILK** powder, stabilisers (sodium alginate, pectins, guar gum, calcium sulphate, diphosphates), glucose syrup, natural flavourings, **ALMONDS**, gelling agent (agar), **MILK** protein, acidity regulator (citric acid), antioxidant (ascorbic acid), vitamin A), mini raspberry crown (water, **WHEAT** flour, sugar, palm oil, raspberries (11%), rapeseed oil, modified starch, yeast, **EGG** yolk, apricot kernels, coconut oil, consistency agent (isomalt), salt, emulsifiers (mono- and diglycerides of fatty acids, mono- and diacetyl tartaric acid esters of mono- and diglycerides of fatty acids), whey powder (**MILK**), gelling agent (agar), stabilisers (pectins, guar gum, sodium alginate, calcium sulphate, diphosphates), acidity regulator (citric acid), **ALMONDS**, colours (calcium carbonates, carotenes), whole **MILK** powder, natural flavourings, glucose syrup, antioxidant (ascorbic acid), **MILK** protein, vitamin A), mini maple pecan (**WHEAT** flour, sugar, water, palm oil, rapeseed oil, **PECAN NUTS** (6%), modified starch, yeast, **EGG** yolk, coconut oil, consistency agent (isomalt), salt, whey powder (**MILK**), emulsifiers (mono- and diglycerides of fatty acids, propylene glycol, mono- and diacetyl tartaric acid esters of mono- and diglycerides of fatty acids), maple flavour, stabilisers (pectins, guar gum, sodium alginate, calcium sulphate, diphosphates), colours (calcium carbonates, carotenes, **SULPHITE AMMONIA CARAMEL**), natural flavourings, whole **MILK** powder, glucose syrup, gelling agent (agar), ethanol, flavouring preparations, acidity regulator (citric acid), antioxidant (ascorbic acid), syrup (maize), **MILK** protein, vitamin A), mini cinnamon swirl (**WHEAT** flour, water, palm oil, sugar, rapeseed oil, **EGGS**, coconut oil, yeast, modified starch, cinnamon (0,5%), gluten (**WHEAT**), consistency agent (isomalt), whey powder (**MILK**), salt, emulsifiers (mono- and diglycerides of fatty acids, mono- and diacetyl tartaric acid esters of mono- and diglycerides of fatty acids), malt flour (**BARLEY**), stabilisers (pectins, guar gum, sodium alginate, calcium sulphate, diphosphates), colours (calcium carbonates, carotenes), whole **MILK** powder, **BARLEY** malt extract, acidity regulator (citric acid), glucose syrup, natural flavourings, gelling agent (agar), antioxidant (ascorbic acid), **MILK** protein, vitamin A), mini apple lattices (**WHEAT** flour, water, apple (17%), palm oil, sugar, rapeseed oil, yeast, **EGG** yolk, modified starch, consistency agent (isomalt), salt, emulsifiers (mono- and diglycerides of fatty acids, mono- and diacetyl tartaric acid esters of mono- and diglycerides of fatty acids), stabilisers (pectins, guar gum), acidity regulator (citric acid), gelling agent (agar), antioxidant (ascorbic acid), natural flavourings, vitamin A), extra syrup and white icing (enclosed syrup (glucose syrup (contains: **SULPHUR DIOXIDE**), sugar, water, maple syrup (4%), molasses, flavouring, acidity regulators (sodium carbonates, hydrochloric acid)), enclosed white icing (sugar, water, glucose syrup, coconut oil, acidity regulator (acetic acid))).

ALLERGENS

Product Contains:

|                                      |     |
|--------------------------------------|-----|
| Celery/Celeriac                      | No  |
| Cereals Containing Gluten            | Yes |
| Barley                               | Yes |
| Oats                                 | No  |
| Rye                                  | No  |
| Wheat (including Spelt and Khorasan) | Yes |
| Gluten content <20ppm                | No  |
| Crustacea                            | No  |
| Eggs                                 | Yes |
| Fish                                 | No  |
| Lupin                                | No  |
| Milk                                 | Yes |
| Molluscs                             | No  |

|                               |             |
|-------------------------------|-------------|
| Mustard                       | No          |
| Nuts (Tree)                   | Yes         |
| Almond nuts                   | Yes         |
| Brazil nuts                   | No          |
| Cashew nuts                   | No          |
| Hazelnuts                     | May Contain |
| Macadamia (Queensland) nuts   | No          |
| Pecan nuts                    | Yes         |
| Pistachio nuts                | No          |
| Walnuts                       | No          |
| Peanuts                       | No          |
| Sesame Seeds                  | No          |
| Soybeans                      | No          |
| Sulphur Dioxide and Sulphites | No          |

Risk Source:

|                                |     |
|--------------------------------|-----|
| Palm Oil                       | Yes |
| Hydrogenated Vegetable Oil/Fat | No  |
| GM Protein/DNA                 | No  |

SUPPLEMENTARY  
INGREDIENT  
INFORMATION

ADDITIVES

Product Contains:

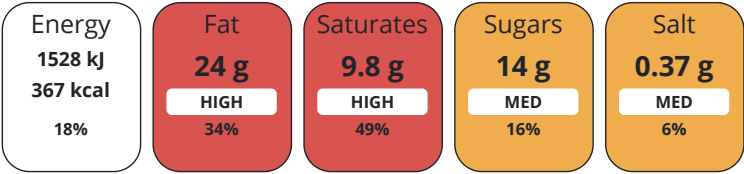
|                       |    |
|-----------------------|----|
| Suitable for Coeliacs | No |
| Kosher Diet           | No |
| Vegan Diet            | No |

DIET SUITABILITY

|                 |              |
|-----------------|--------------|
| Halal Diet      | No           |
| Vegetarian Diet | Suitable for |

NUTRITIONAL  
INFORMATION

Each 100g/ml portion contains:



of your reference intake.

Typical values per 100g/ml : Energy 367kcal / 1528kj

| Nutrient           | per 100g/ml | RI per 100g/ml |
|--------------------|-------------|----------------|
| Energy (kJ)        | 1528 kJ     | 18%            |
| Energy (kcal)      | 367 kcal    | 18%            |
| Fat                | 24 g        | 34%            |
| of which Saturates | 9.8 g       | 49%            |
| Carbohydrate       | 32 g        | 12%            |
| of which Sugars    | 14 g        | 16%            |
| Fibre              | 1.4 g       |                |
| Protein            | 4 g         | 8%             |
| Salt               | 0.37 g      | 6%             |

SUPPLEMENTARY  
NUTRITIONAL  
INFORMATION

HANDLING &  
STORAGE  
INFORMATION

Directions For Use

Defrost at 22°C for 15 minutes. Preheat oven to 210°C. Bake at 180°C for 13 - 15 minutes.

Storage Instructions

Keep at -18 °C. Do not refreeze after defrosting.

Shelf Life from Time of Production450 Days

ACCREDITATIONS/  
CERTIFICATIONS/  
ASSURANCE  
SCHEMES  
ORIGIN

IFS Food Standard

Other Accreditation

Product Country of OriginOther

Additional Origin Details

Within the EU.

PRODUCT  
CHARACTERISTICS  
CONFIGURATION

Standards Testing

Case Configuration

Inner Pack Configuration

Total Quantity of Inner Components in110 Units

Outer Case

Is the Outer Case Splittable?No

PRODUCT  
WEIGHTS

Inner Component

Variable Weight Consumer ItemNo

Weight/Volume

4 x 202 x 15 x 40±3 g

Outer Case

Outer Case Gross Weight4.8 kg

Outer Case Net Weight4.4 kg

PRODUCT  
DIMENSIONS

Inner Component

Inner Component Depth390 mm

Inner Component Width280 mm

Inner Component Height60 mm

Outer Case

Outer Case Depth395 mm

Outer Case Width295 mm

Outer Case Height139 mm

PALLET  
INFORMATION

Quantity of Cases Per Pallet Layer8 Cases

Pallet Height1.96 MTR

Quantity of Layers Per Pallet13 Layers

Quantity of Cases Per Pallet104 Cases

PACKAGING

Inner Component Packaging

| Type | Materials | Weight | Recycled Plastic % | Recyclable | Returnable | Composite |
|------|-----------|--------|--------------------|------------|------------|-----------|
| Bag  | Plastic   | 704 g  | - %                |            |            |           |

Outer Case Packaging

| Type | Materials       | Weight | Recycled Plastic % | Recyclable | Returnable | Composite |
|------|-----------------|--------|--------------------|------------|------------|-----------|
| Case | Paper/Cardboard | 304 g  | - %                |            |            |           |

OTHER  
INFORMATION

Manufacturer Comments

Pallet configuration given is per Euro pallet. UK pallet configuration available on request from the supplier. We aim to deliver with a minimum of three months shelf life.

CONTACT  
INFORMATION

Address  
La Lorraine UK Ltd  
Europa House  
Barcroft Street  
Bury  
Greater Manchester  
BL9 5BT  
United Kingdom

P: (Phone) +44 161 765 3300

Complaints Contact  
Gail Marsh  
Customer Service Administrator  
gail.marsh@llbg.com

P: (Phone) +44 161 765 3300

Technical Contact  
Gail Marsh  
Customer Service Administrator  
gail.marsh@llbg.com

P: (Phone) +44 161 765 3300

Commercial Contact  
Ros Karpozis  
Sales Manager Food Service  
ros.karpozis@llbg.com

P: (Phone) +44 7487615790

The information on the [Erudus System](#) has been supplied by the manufacturers of the products and, whilst the owners of the Erudus System take steps to ensure the information is regularly updated, they give no warranty and no guarantee that the information is accurate. Product information and ingredients may change, please always read product labels carefully in addition to using the information provided by Erudus.

We do not accept liability for any inaccuracies or incorrect information contained on this site.  
Please visit <http://www.erudus.com/terms-and-conditions> for full terms and conditions.