

58437

Waffle Cones Vermont Sleeved Gelato x 120

Waffle Cones Vermont Sleeved Gelato 120x20g

PRODUCT DESCRIPTION

Waffle Cones Vermont Sleeved Gelato

Brand	Nic Ice Ltd
Manufacturer Product	WP2005
Code	
Product Type	Food
Product Category	Biscuits, Wafers and Crackers
Storage Type	Ambient
Erudus ID	dc299ca7d6a5468da799fa51c18404d8
Specification Type	Legacy

Outer Case GTIN05011229220051



INGREDIENTS

Ingredient Declaration

WHEAT flour, sugar, palm oil, **WHEAT** starch, emulsifier (**SOYA** lecithin), salt, flavouring

ALLERGENS

Product Contains:

Celery/Celeriac	No
Cereals Containing Gluten	Yes
Barley	No
Oats	No
Rye	No
Wheat (including Spelt and Khorasan)	Yes
Gluten content <20ppm	No
Crustacea	No
Eggs	No
Fish	No
Lupin	No
Milk	May Contain
Molluscs	No

Mustard	No
Nuts (Tree)	No
Almond nuts	No
Brazil nuts	No
Cashew nuts	No
Hazelnuts	No
Macadamia (Queensland) nuts	No
Pecan nuts	No
Pistachio nuts	No
Walnuts	No
Peanuts	No
Sesame Seeds	No
Soybeans	Yes
Sulphur Dioxide and Sulphites	No

Risk Source:

Additional Allergen Information

For Allergens, including cereals containing gluten, see ingredients in bold. May contain traces of Milk

SUPPLEMENTARY
INGREDIENT
INFORMATION

Palm Oil	Yes
Hydrogenated Vegetable Oil/Fat	No
GM Protein/DNA	No

ADDITIVES

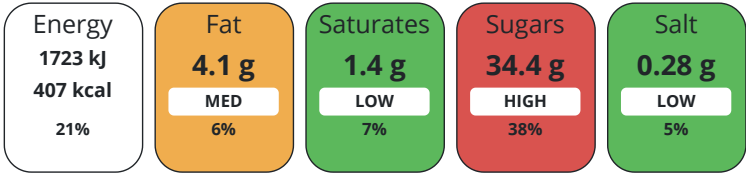
Product Contains:

Artificial Antioxidants	No	Artificial Preservatives	No
Artificial Colours	No	Artificial Sweeteners	No
Suitable for Coeliacs	No	Halal Diet	No
Kosher Diet	No	Vegetarian Diet	No
Vegan Diet	No		

DIET SUITABILITY

NUTRITIONAL INFORMATION

Each 100g/ml portion contains:



of your reference intake.

Typical values per 100g/ml : Energy 407kcal / 1723kj

Nutrient	per 100g/ml	RI per 100g/ml	per 20g/ml serving	RI per 20g/ml serving
Energy (kJ)	1723 kJ	21%	344.6	4%
Energy (kcal)	407 kcal	20%	81.4	4%
Fat	4.1 g	6%	0.82 g	1%
of which Saturates	1.4 g	7%	0.28 g	1%
Carbohydrate	84.9 g	33%	16.98 g	7%
of which Sugars	34.4 g	38%	6.88 g	8%
Fibre	2.8 g		0.56 g	
Protein	6.3 g	13%	1.26 g	3%
Salt	0.28 g	5%	0.06 g	1%
Serving Size	20 g			

SUPPLEMENTARY NUTRITIONAL INFORMATION

HANDLING & STORAGE INFORMATION

Directions For Use

For use with ice cream/sorbet

Storage Instructions

Store at Ambient - Keep away from strong odours and direct sunlight.

Shelf Life from Time of Production	730 Days
------------------------------------	----------

IFS Food Standard
Other Accreditation

Roundtable of Sustainable Palm Oil (RSPO)

Product Country of Origin	Germany
---------------------------	---------

ACCREDITATIONS/ CERTIFICATIONS/ ASSURANCE SCHEMES ORIGIN

PRODUCT CHARACTERISTICS

Standards Testing		
Do you undertake trend analysis of microbiological results?	Yes	Is shelf life testing undertaken? Yes

Microbiological Standards					
Organism	Description	Frequency	Target	Maximum	Sample (g or ml)
E. Coli (cfu/g or ml)		Occasionally	=0	0	-

	Organism	Description	Frequency	Target	Maximum	Sample (g or ml)	
	Enterobacteriaceae (cfu/g or ml)		Occasionally	<10	10	-	
	Listeria Monocytogenes (cfu/g or ml)	in 25g	Occasionally	=0	0	-	
	Staphylococcus Aureus (cfu/g or ml)		Occasionally	<10	10	-	
	Salmonella (cfu/g or ml)	in 25g	Occasionally	=0	0	-	
	Yeast (cfu/g or ml)		Occasionally	<100	100	-	
	Moulds (cfu/g or ml)		Occasionally	<100	100	-	
	Aerobic Colony Count (ACC) (cfu/g or ml)		Occasionally	<10000	10000	-	
CONFIGURATION	Case Configuration			Inner Pack Configuration			
	Total Quantity of Inner Components in Outer Case	120 Units	Count per Inner Component		120		
PRODUCT WEIGHTS	Inner Component						
	Variable Weight Consumer Item	No					
	Inner Component Weight	20 g					
	Outer Case						
	Outer Case Gross Weight	3 kg					
	Outer Case Net Weight	2.4 kg					
PRODUCT DIMENSIONS	Inner Component						
	Inner Component Depth	155 mm					
	Inner Component Width	58 mm					
	Inner Component Height	58 mm					
	Outer Case						
	Outer Case Depth	390 mm					
PALLET INFORMATION	Outer Case Width	290 mm					
	Outer Case Height	220 mm					
	Quantity of Cases Per Pallet Layer	9 Cases	Pallet Height		1.76 MTR		
	Quantity of Layers Per Pallet	8 Layers	Pallet Gross Weight		245 kg		
	Quantity of Cases Per Pallet	72 Cases					
	PACKAGING	Inner Component Packaging					
Type		Materials	Weight	Recycled Plastic %	Recyclable	Returnable	Composite
Bag		Plastic	83.5 g	- %			
Bag		Paper/Cardboard	136 g	- %			
Outer Case Packaging							
Type		Materials	Weight	Recycled Plastic %	Recyclable	Returnable	Composite
	Case	Paper/Cardboard	340 g	- %			
OTHER INFORMATION							

CONTACT
INFORMATION

Address

Nic Ice Ltd
18-22 Thames Road
Barking
Essex
IG11 0HZ
England

P: (Phone) 020 8591 3399

The information on the [Erudus System](#) has been supplied by the manufacturers of the products and, whilst the owners of the Erudus System take steps to ensure the information is regularly updated, they give no warranty and no guarantee that the information is accurate. Product information and ingredients may change, please always read product labels carefully in addition to using the information provided by Erudus.

We do not accept liability for any inaccuracies or incorrect information contained on this site.
Please visit <http://www.erudus.com/terms-and-conditions> for full terms and conditions.