

ELV6821

EV EXCEL COOK CREAM 35% FAT 1LX12

Ev Excel Cook Cream 35% Fat 1lx12 12x992g

PRODUCT DESCRIPTION
This product is sold under Elle&Vire brand name

Brand	Savencia Fromage & Dairy UK Ltd
Manufacturer Product Code	28906821
Effective Date	Nov 26, 2024
Product Type	Food
Product Category	Single/Pouring Cream
Storage Type	Chilled
Erudus ID	97065ca6b5174238be3e85ac00bea877
Specification Type	Dairy
Inner Component GTIN	3451790802249
Outer Case GTIN	03451796014721



INGREDIENTS

Ingredient Declaration
Pasteurised cow's MILK cream, Thickener - Carrageenan E 407, SIN1422/E1422 modified starche (vegetable / corn), Emulsifier - E471 mono and diglyceride SIN471 / E471 (vegetable)

ALLERGENS

Product Contains:

Celery/Celeriac	No
Cereals Containing Gluten	No
Barley	No
Oats	No
Rye	No
Wheat (including Spelt and Khorasan)	No
Crustacea	No
Eggs	No
Fish	No
Lupin	No
Milk	Yes
Molluscs	No

Mustard	No
Nuts (Tree)	No
Almond nuts	No
Brazil nuts	No
Cashew nuts	No
Hazelnuts	No
Macadamia (Queensland) nuts	No
Pecan nuts	No
Pistachio nuts	No
Walnuts	No
Peanuts	No
Sesame Seeds	No
Soybeans	No
Sulphur Dioxide and Sulphites	No

Additional Allergen Information
CREAM (from MILK)

SUPPLEMENTARY
INGREDIENT
INFORMATION

Palm Oil	No
Hydrogenated Vegetable Oil/Fat	No
GM Protein/DNA	No

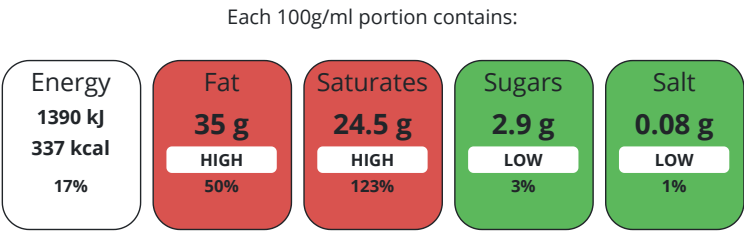
ADDITIVES

Product Contains:			
Artificial Antioxidants	No	Artificial Flavourings	No
Artificial Colours	No	Artificial Preservatives	No
Artificial Flavour Enhancers	No	Artificial Sweeteners	No

DIET SUITABILITY

Vegetarian Diet	No	Halal Diet	No
Kosher Diet	No		

NUTRITIONAL
INFORMATION AS
SOLD



of your reference intake.
Typical values per 100g/ml : Energy 337kcal / 1390kJ

Nutrient	per 100g	RI per 100g	per 100g serving	RI per 100g serving
Energy (kJ)	1390 kJ	17%	1390	17%
Energy (kcal)	337 kcal	17%	337	17%
Fat	35 g	50%	35 g	50%
of which Saturates	24.5 g	123%	24.5 g	123%
Carbohydrate	3.5 g	1%	3.5 g	1%
of which Sugars	2.9 g	3%	2.9 g	3%
Protein	2.1 g	4%	2.1 g	4%
Salt	0.08 g	1%	0.08 g	1%
Sodium	< 0.01 mg		0.01 mg	

Serving Size	100 g
--------------	-------

SUPPLEMENTARY
NUTRITIONAL
INFORMATION

Trans Fats per 100 g/ml	1.6 g
-------------------------	-------

HFSS (HIGH IN
FAT, SALT AND
SUGAR)
HANDLING &
STORAGE
INFORMATION

HFSS Status	No
-------------	----

Directions For Use

Serving fresh

Storage Instructions

Between +2°C and +8°C . After opening, keep refrigerated and use within 48h. Do not freeze

Shelf Life from Time of Production	273 Days
------------------------------------	----------

ACCREDITATIONS/
CERTIFICATIONS/
ASSURANCE
SCHEMES
ORIGIN

BRCGS Certified

Product Country of Origin	France
Origin of the Primary Ingredient	

PRODUCT
CHARACTERISTICS

Standards Testing

	Do you undertake trend analysis of microbiological results?	No	Is shelf life testing undertaken?	Yes
CONFIGURATION	Case Configuration		Inner Pack Configuration	
	Total Quantity of Inner Components in Outer Case	12 Units		
PRODUCT WEIGHTS	Inner Component			
	Variable Weight Consumer Item	No		
	Inner Component Weight	992 g		
	Outer Case			
	Outer Case Gross Weight	12.47 kg		
	Outer Case Net Weight	11.9 kg		
PRODUCT DIMENSIONS	Inner Component			
	Inner Component Depth	59 mm		
	Inner Component Width	90 mm		
	Inner Component Height	210 mm		
	Outer Case			
	Outer Case Depth	375 mm		
	Outer Case Width	180 mm		
	Outer Case Height	213 mm		
PALLET INFORMATION	Quantity of Cases Per Pallet Layer	12 Cases	Pallet Type	Euro Pallet
	Quantity of Layers Per Pallet	6 Layers	Pallet Height	1.43 MTR
	Quantity of Cases Per Pallet	72 Cases	Pallet Gross Weight	923.9 kg
SAFETY & WARNINGS				
OTHER INFORMATION				
CONTACT INFORMATION	Address Savencia Fromage & Dairy UK Ltd The Ham Westbury Wiltshire BA13 4HA United Kingdom			
	Complaints Contact Savencia Fromage & Dairy UK Team info@savencia-fd.co.uk			
	P: (Phone) 01373 864657			

The information on the [Erudus System](#) has been supplied by the manufacturers of the products and, whilst the owners of the Erudus System take steps to ensure the information is regularly updated, they give no warranty and no guarantee that the information is accurate. Product information and ingredients may change, please always read product labels carefully in addition to using the information provided by Erudus.

We do not accept liability for any inaccuracies or incorrect information contained on this site.
Please visit <http://www.erudus.com/terms-and-conditions> for full terms and conditions.