

Changed May 08, 2024 14:30

Reviewed May 08, 2024 14:30

Erudus ID 50f767b4e41d41b1bfed45c7460d10fc

Version 2.0

Status Published

FUTCAM102

Campesino Goat's Cheese Log, 4x1kg

Goat's Cheese Log

PRODUCT DESCRIPTION

Large individual logs of soft goats cheese with a white mould rind packed in a plastic tray.

Brand	Futura Foods UK Ltd
Manufacturer Product Code	15129 / CAM102
Product Type	Food
Product Category	Sheep & Goats Cheese
Storage Type	Chilled
Erudus ID	50f767b4e41d41b1bfed45c7460d10fc
Specification Type	Cheese
Inner Component GTIN	5038961000376
Outer Case GTIN	25038961000370



INGREDIENTS

Ingredient Declaration

Pasteurised Goat's MILK, Salt, Microbial Rennet, Cultures (Lactic Ferments), Penicillium

ALLERGENS

Product Contains:

Celery/Celeriac	No
Cereals Containing Gluten	No
Barley	No
Oats	No
Rye	No
Wheat (including Spelt and Khorasan)	No
Crustacea	No
Eggs	No
Fish	No
Lupin	No
Milk	Yes
Molluscs	No

Mustard	No
Nuts (Tree)	No
Almond nuts	No
Brazil nuts	No
Cashew nuts	No
Hazelnuts	No
Macadamia (Queensland) nuts	No
Pecan nuts	No
Pistachio nuts	No
Walnuts	No
Peanuts	No
Sesame Seeds	No
Soybeans	No
Sulphur Dioxide and Sulphites	No

Additional Allergen Information

Contains MILK

SUPPLEMENTARY INGREDIENT INFORMATION

Palm Oil	No
Hydrogenated Vegetable Oil/Fat	No
GM Protein/DNA	No

ADDITIVES

Product Contains:

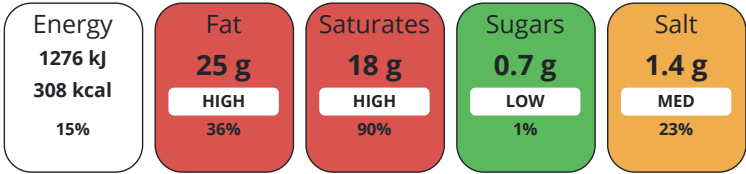
Artificial Antioxidants	No	Artificial Flavourings	No
Artificial Colours	No	Artificial Preservatives	No
Artificial Flavour Enhancers	No	Artificial Sweeteners	No

DIET SUITABILITY

Vegetarian Diet	Suitable for	Halal Diet	No
Kosher Diet	No		

NUTRITIONAL
INFORMATION AS
SOLD

Each 100g/ml portion contains:



of your reference intake.

Typical values per 100g/ml : Energy 308kcal / 1276kJ

Nutrient	per 100g	RI per 100g
Energy (kJ)	1276 kJ	15%
Energy (kcal)	308 kcal	15%
Fat	25 g	36%
of which Saturates	18 g	90%
Carbohydrate	3.1 g	1%
of which Sugars	0.7 g	1%
Protein	1 g	2%
Salt	1.4 g	23%

SUPPLEMENTARY
NUTRITIONAL
INFORMATION

Fat Percentage in Dry Matter per 100 g/ml	45 %
---	------

HANDLING &
STORAGE
INFORMATION

Directions For Use	Once opened keep refrigerated & use within 3 days. Do not exceed the expiry date
Storage Instructions	Keep Refrigerated
Shelf Life from Time of Production	67 Days

ACCREDITATIONS/
CERTIFICATIONS/
ASSURANCE
SCHEMES
ORIGIN

BRCGS Certified	IFS Food Standard
Other Accreditation	
Product Country of Origin	Spain
Additional Origin Details	Spain
Origin of the Primary Ingredient	

PRODUCT
CHARACTERISTICS

Standards Testing		
Do you undertake trend analysis of microbiological results?	No	Is shelf life testing undertaken? No
Microbiological Standards		

	Organism	Description	Frequency	Target	Maximum	Sample (g or ml)
	Listeria Monocytogenes (cfu/g or ml)		Every Batch	=0	0	25
	Salmonella (cfu/g or ml)		Every Batch	=0	0	25
	Staphylococcus Aureus (cfu/g or ml)		Every Batch	<100	100	1
	E. Coli (cfu/g or ml)		Every Batch	<1000	100	100
	Analytical Standards					
	Test	Description	Frequency	Target	Range	Sample (g or ml)
	pH		Every Batch	=4.5	4.3 to 4.8	100
	Moisture (%)		Every Batch	<52	40 to 52	100
	CONFIGURATION	Case Configuration			Inner Pack Configuration	
	Total Quantity of Inner Components in Outer Case	4 Units				
	Is the Outer Case Splittable?	Yes				
PRODUCT WEIGHTS	Inner Component					
	Variable Weight Consumer Item	Yes				
	Outer Case					
	Outer Case Gross Weight	4.63 kg				
	Outer Case Net Weight	4 kg				
	Inner Component					
	Inner Component Depth	230 mm				
PRODUCT DIMENSIONS	Inner Component Width	77 mm				
	Inner Component Height	77 mm				
	Outer Case					
	Outer Case Depth	550 mm				
	Outer Case Width	260 mm				
	Outer Case Height	106 mm				
PALLET INFORMATION	Quantity of Cases Per Pallet Layer	6 Cases			Pallet Height	1.7 MTR
	Quantity of Layers Per Pallet	15 Layers				
	Quantity of Cases Per Pallet	90 Cases				
PACKAGING	Inner Component Packaging					
	Type	Materials	Weight	Recycled Plastic %	Recyclable	Returnable
	Tub	Plastic	95 g	- %		Composite
	Tub	Paper/Cardboard	1 g	- %		
	Outer Case Packaging					
	Type	Materials	Weight	Recycled Plastic %	Recyclable	Returnable
	Case	Paper/Cardboard	300 g	- %		
SAFETY & WARNINGS						
OTHER INFORMATION	Manufacturer Comments					
	N/A					

CONTACT
INFORMATION

Address

Futura Foods UK Ltd
The Priory
Long Street
Dursley
GL11 4HR
England

P: (Phone) 01666 890500

The information on the [Erudus System](#) has been supplied by the manufacturers of the products and, whilst the owners of the Erudus System take steps to ensure the information is regularly updated, they give no warranty and no guarantee that the information is accurate. Product information and ingredients may change, please always read product labels carefully in addition to using the information provided by Erudus.

We do not accept liability for any inaccuracies or incorrect information contained on this site.
Please visit <http://www.erudus.com/terms-and-conditions> for full terms and conditions.