

FUTGOL104

# MOZZARELLA GALATEA 10x1KG

Mozzarella

PRODUCT DESCRIPTION  
A block of Cow's Milk Mozzarella

Brand	Futura Foods UK Ltd
Manufacturer Product Code	15544
Product Type	Food
Product Category	Semi-Soft Cheese
Storage Type	Chilled
Erudus ID	f231f2ebbbbba43d8aaff4d12b423fa25
Specification Type	Cheese
Inner Component GTIN	8003279000087
Inner Pack GTIN	8003279000087
Outer Case GTIN	9800327000087



## INGREDIENTS

**Ingredient Declaration**  
Pasteurised Cow's **MILK**, Salt, Microbial Rennet, Starter Culture.

**Ingredient Statements**  
Contains MILK

## ALLERGENS

Product Contains:

Celery/Celeriac	No
Cereals Containing Gluten	No
Barley	No
Oats	No
Rye	No
Wheat (including Spelt and Khorasan)	No
Crustacea	No
Eggs	No
Fish	No
Lupin	No
Milk	Yes
Molluscs	No

Mustard	No
Nuts (Tree)	No
Almond nuts	No
Brazil nuts	No
Cashew nuts	No
Hazelnuts	No
Macadamia (Queensland) nuts	No
Pecan nuts	No
Pistachio nuts	No
Walnuts	No
Peanuts	No
Sesame Seeds	No
Soybeans	No
Sulphur Dioxide and Sulphites	No

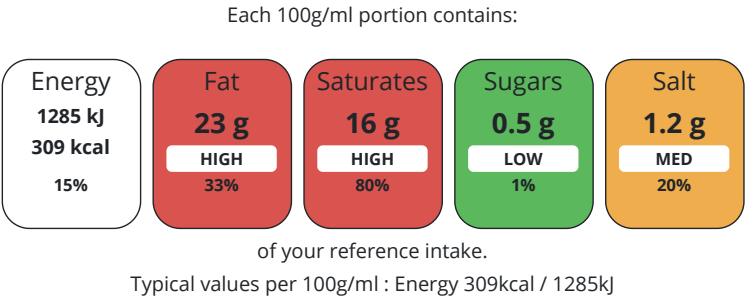
**Allergen Statement On Pack**  
Contains MILK

SUPPLEMENTARY  
INGREDIENT  
INFORMATION  
ADDITIVES

DIET SUITABILITY

NUTRITIONAL  
INFORMATION AS  
SOLD

GM Protein/DNA	No		
Product Contains:			
Vegetarian Diet	Suitable for	Halal Diet	No
Kosher Diet	No		



Nutrient	per 100g	RI per 100g	per 100g serving	RI per 100g serving
Energy (kj)	1285 kj	15%	1285	15%
Energy (kcal)	309 kcal	15%	309	15%
Fat	23 g	33%	23 g	33%
of which Saturates	16 g	80%	16 g	80%
Carbohydrate	0.5 g	0%	0.5 g	0%
of which Sugars	0.5 g	1%	0.5 g	1%
Protein	25 g	50%	25 g	50%
Salt	1.2 g	20%	1.2 g	20%

Serving Size	100 g
--------------	-------

Source of Nutritional Information	Calculation from known/accepted datasets
-----------------------------------	--

SUPPLEMENTARY  
NUTRITIONAL  
INFORMATION

HANDLING &  
STORAGE  
INFORMATION

Directions For Use	Ready to eat
Storage Instructions	Chilled
Storage Instructions After Opening	Chilled
Shelf Life from Time of Production	35 Days
Shelf Life From Opening	2 Days

BRCGS Certified
-----------------

Product Country of Origin	Italy
Origin of the Primary Ingredient	

PRODUCT  
CHARACTERISTICS

Standards Testing			
Do you undertake trend analysis of microbiological results?	Yes	Is shelf life testing undertaken?	Yes
Microbiological Standards			

	<b>Organism</b>	<b>Description</b>	<b>Frequency</b>	<b>Target</b>	<b>Maximum</b>	<b>Sample (g or ml)</b>
	E. Coli (cfu/g or ml)		Weekly	<10	100	100
	Staphylococcus Aureus (cfu/g or ml)		Monthly	<10	10	100
	Salmonella (cfu/g or ml)		Monthly	=0	0	100
	Listeria Monocytogenes (cfu/g or ml)		Monthly	=0	0	100
CONFIGURATION	Case Configuration			Inner Pack Configuration		
	<b>Variable Inner Components in Outer Case</b>	No	<b>Is Inner Pack Splittable?</b>		No	
	<b>Total Quantity of Inner Components in Outer Case</b>	10 Units				
	<b>Is the Outer Case Splittable?</b>	No				
PRODUCT WEIGHTS	Inner Component					
	<b>Variable Weight Consumer Item</b>	Yes				
	Outer Case					
	<b>Outer Case Gross Weight</b>	10.35 kg				
	<b>Outer Case Net Weight</b>	10 kg				
PRODUCT DIMENSIONS	Inner Component					
	<b>Inner Component Depth</b>	215 mm				
	<b>Inner Component Width</b>	75 mm				
	<b>Inner Component Height</b>	75 mm				
	Outer Case					
	<b>Outer Case Depth</b>	350 mm				
	<b>Outer Case Width</b>	240 mm				
	<b>Outer Case Height</b>	125 mm				
PALLET INFORMATION	<b>Quantity of Cases Per Pallet Layer</b>	8 Cases	<b>Pallet Height</b>		1.8 MTR	
	<b>Quantity of Layers Per Pallet</b>	6 Layers	<b>Pallet Gross Weight</b>		10.3 kg	
	<b>Quantity of Cases Per Pallet</b>	48 Cases				
SAFETY & WARNINGS						
OTHER INFORMATION						
CONTACT INFORMATION	Address Futura Foods UK Ltd The Priory Long Street Dursley GL11 4HR England  P: (Phone) 01666 890500					

The information on the [Erudus System](#) has been supplied by the manufacturers of the products and, whilst the owners of the Erudus System take steps to ensure the information is regularly updated, they give no warranty and no guarantee that the information is accurate. Product information and ingredients may change, please always read product labels carefully in addition to using the information provided by Erudus.

We do not accept liability for any inaccuracies or incorrect information contained on this site.  
Please visit <http://www.erudus.com/terms-and-conditions> for full terms and conditions.