

FUTINV106

INVERNIZZI Gorgonzola Dolce, 4x1.5kg app

15189 (Inv106) Invernizzi Gorgonzola Dolce, 4x1.5kg App.

PRODUCT DESCRIPTION

Variable weight wedges of DOP Gorgonzola Dolce.

Brand	Futura Foods UK Ltd
Manufacturer Product Code	15189 (INV106)
Product Type	Food
Product Category	Other Cheese
Storage Type	Chilled
Erudus ID	40285f56d89649f2a83ee9a7709f30b7
Specification Type	Cheese
Outer Case GTIN	98017024006180



INGREDIENTS

Ingredient Declaration
Cow's **MILK**, Salt, Rennet (Animal), Starter, Yeast & Mould spores

ALLERGENS

Product Contains:

Celery/Celeriac	No
Cereals Containing Gluten	No
Barley	No
Oats	No
Rye	No
Wheat (including Spelt and Khorasan)	No
Crustacea	No
Eggs	No
Fish	No
Lupin	No
Milk	Yes
Molluscs	No

Mustard	No
Nuts (Tree)	No
Almond nuts	No
Brazil nuts	No
Cashew nuts	No
Hazelnuts	No
Macadamia (Queensland) nuts	No
Pecan nuts	No
Pistachio nuts	No
Walnuts	No
Peanuts	No
Sesame Seeds	No
Soybeans	No
Sulphur Dioxide and Sulphites	No

Additional Allergen Information
Contains MILK

FREE FROM CLAIMS

Free From Barley	Yes	Free From Mustard	Yes
Free From Celery/Celeriac	Yes	Free From Nuts	Yes
Free From Crustacea	Yes	Free From Oats	Yes
Free From Eggs	Yes	Free From Peanuts	Yes
Free From Fish	Yes	Free From Rye	Yes
Gluten-Free	Yes	Free From Sesame	Yes
Free From Lupin	Yes	Free From Soybeans	Yes
Free From Molluscs	Yes	Free From Sulphur Dioxide	Yes
		Very Low Gluten	Yes
		Free From Wheat	Yes

SUPPLEMENTARY INGREDIENT INFORMATION

Palm Oil	No
Hydrogenated Vegetable Oil/Fat	No
GM Protein/DNA	No

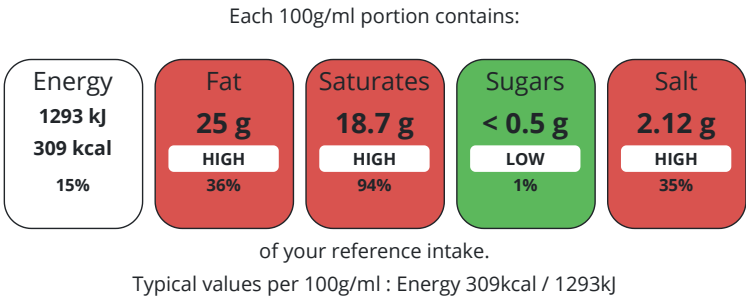
ADDITIVES

Product Contains:			
Artificial Antioxidants	No	Artificial Flavourings	No
Artificial Colours	No	Artificial Preservatives	No
Artificial Flavour Enhancers	No	Artificial Sweeteners	No

DIET SUITABILITY

Vegetarian Diet	No	Halal Diet	No
Kosher Diet	No		

NUTRITIONAL INFORMATION AS SOLD



Nutrient	per 100g	RI per 100g
Energy (kJ)	1293 kJ	15%
Energy (kcal)	309 kcal	15%
Fat	25 g	36%
of which Saturates	18.7 g	94%
Carbohydrate	< 0.5 g	0%
of which Sugars	< 0.5 g	1%
Protein	21.2 g	42%
Salt	2.12 g	35%
Sodium	848 mg	

SUPPLEMENTARY NUTRITIONAL INFORMATION

Fat Percentage in Dry Matter per 100 g/ml	48 %
---	------

HANDLING &
STORAGE
INFORMATION

Directions For Use

Cheese rind is not edible.

Storage Instructions

Keep refrigerated, once open consume within 3 days.

Shelf Life from Time of Production	80 Days
Shelf Life From Opening	3 Days

ACCREDITATIONS/
CERTIFICATIONS/
ASSURANCE
SCHEMES
ORIGIN

BRCGS Certified	Other Accreditation
Product Country of Origin	Italy
Additional Origin Details	
Italy	
Origin of the Primary Ingredient	

PRODUCT
CHARACTERISTICS

Standards Testing					
Do you undertake trend analysis of microbiological results?	No	Is shelf life testing undertaken?	No		
Microbiological Standards					
Organism	Description	Frequency	Target	Maximum	Sample (g or ml)
E. Coli (cfu/g or ml)		Monthly	<100	1000	1
Listeria Monocytogenes (cfu/g or ml)	Absent in 25g	Monthly	=25	0	25
Salmonella (cfu/g or ml)	Absent in 25g	Monthly	=0	0	25
Analytical Standards					
Test	Description	Frequency	Target	Range	Sample (g or ml)
pH		Monthly	=6	6.0 to 6.2	100
Fat Content (%)		Monthly	>25	25 to 30	100

SUPPLEMENTARY INFORMATION

Milk Type	Cow	Pasteurised	Yes
-----------	-----	-------------	-----

ORGANOLEPTICS

Appearance

Cream with blue/green mould veins.

Taste

Creamy typical to Gorgonzola

Texture

Soft, creamy with veins of mould.

CONFIGURATION

Case Configuration	Inner Pack Configuration
Total Quantity of Inner Components in Outer Case	4 Units
Is the Outer Case Splittable?	No

PRODUCT
WEIGHTS

Inner Component	
Variable Weight Consumer Item	Yes
Net Drained Weight	1.5 kg
Outer Case	
Outer Case Gross Weight	792 kg
Outer Case Net Weight	720 kg

PRODUCT DIMENSIONS	Inner Component						
	Inner Component Depth		190 mm				
	Inner Component Width		225 mm				
	Inner Component Height		90 mm				
PALLET INFORMATION	Outer Case						
	Outer Case Depth		400 mm				
	Outer Case Width		210 mm				
	Outer Case Height		110 mm				
	Quantity of Cases Per Pallet Layer		6 Cases		Pallet Type		Euro Pallet
	Quantity of Layers Per Pallet		10 Layers		Pallet Height		1.3 MTR
	Quantity of Cases Per Pallet		60 Cases		Pallet Gross Weight		403 kg
PACKAGING	Inner Component Packaging						
	Type	Materials	Weight	Recycled Plastic %	Recyclable	Returnable	Composite
	Foil	Plastic	30 g	- %			
	Foil	Other	34 g	- %			
	Outer Case Packaging						
	Type	Materials	Weight	Recycled Plastic %	Recyclable	Returnable	Composite
	Paper Foil	Paper/Cardboard	220 g	- %			
SAFETY & WARNINGS							
OTHER INFORMATION	Commodity Code		04064050		Identification/Health Marks		IT 01 698 CE
	Manufacturer Comments						
	Not Specified.						
CONTACT INFORMATION	Address						
	Futura Foods UK Ltd						
	The Priory						
	Long Street						
	Dursley						
	GL11 4HR						
	England						
	P: (Phone) 01666 890500						

The information on the [Erudus System](#) has been supplied by the manufacturers of the products and, whilst the owners of the Erudus System take steps to ensure the information is regularly updated, they give no warranty and no guarantee that the information is accurate. Product information and ingredients may change, please always read product labels carefully in addition to using the information provided by Erudus.

We do not accept liability for any inaccuracies or incorrect information contained on this site.
Please visit <http://www.erudus.com/terms-and-conditions> for full terms and conditions.