

FUTYAM011

YAMAS! Greek Feta 6x900g

Yamas! Greek Feta, 6x900g 6x900g

PRODUCT DESCRIPTION
PDO Greek Feta made from pasteurised Sheep & Goat's milk

Brand	Futura Foods UK Ltd
Manufacturer Product Code	15263
Product Type	Food
Product Category	Sheep & Goats Cheese
Storage Type	Chilled
Erudus ID	7932106331594a07bcae32e152f1ebd7
Specification Type	Cheese
Inner Component GTIN	5038961601511
Outer Case GTIN	05038961001137



BARLEY
FREE



CELERY
FREE



EGG
FREE



FISH
FREE



GLUTEN
FREE



LUPIN
FREE



MUSTARD
FREE



MOLLUSC
FREE



NUT
FREE



OAT
FREE



PEANUT
FREE



RYE
FREE



SESAME
FREE



SOYA
FREE



SULPHITE
FREE



VERY LOW
GLUTEN



WHEAT
FREE



Suitable for



INGREDIENTS

Ingredient Declaration
Feta Cheese contains Pasteurised Sheep & Goat's MILK

ALLERGENS

Product Contains:

Celery/Celeriac	No
Cereals Containing Gluten	No
Barley	No
Oats	No
Rye	No
Wheat (including Spelt and Khorasan)	No
Crustacea	No
Eggs	No
Fish	No
Lupin	No
Milk	Yes
Molluscs	No

Mustard	No
Nuts (Tree)	No
Almond nuts	No
Brazil nuts	No
Cashew nuts	No
Hazelnuts	No
Macadamia (Queensland) nuts	No
Pecan nuts	No
Pistachio nuts	No
Walnuts	No
Peanuts	No
Sesame Seeds	No
Soybeans	No
Sulphur Dioxide and Sulphites	No

Additional Allergen Information
Contains MILK

FREE FROM CLAIMS

Free From Barley	Yes	Free From Mustard	Yes
Free From Celery/Celeriac	Yes	Free From Nuts	Yes
Free From Eggs	Yes	Free From Oats	Yes
Free From Fish	Yes	Free From Peanuts	Yes
Gluten-Free	Yes	Free From Rye	Yes
Free From Lupin	Yes	Free From Sesame	Yes
Free From Molluscs	Yes	Free From Soybeans	Yes
		Free From Sulphur Dioxide	Yes
		Very Low Gluten	Yes
		Free From Wheat	Yes

SUPPLEMENTARY INGREDIENT INFORMATION

Palm Oil	No
Hydrogenated Vegetable Oil/Fat	No
GM Protein/DNA	No

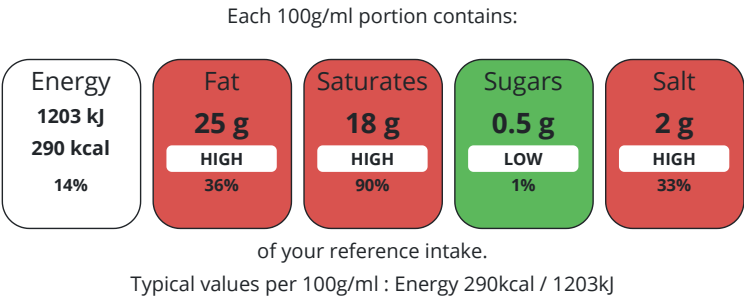
ADDITIVES

Product Contains:			
Artificial Antioxidants	No	Artificial Flavourings	No
Artificial Colours	No	Artificial Preservatives	No
Artificial Flavour Enhancers	No	Artificial Sweeteners	No

DIET SUITABILITY

Vegetarian Diet	Suitable for	Halal Diet	No
Kosher Diet	No		

NUTRITIONAL INFORMATION AS SOLD



Nutrient	per 100g	RI per 100g
Energy (kj)	1203 kj	14%
Energy (kcal)	290 kcal	15%
Fat	25 g	36%
of which Saturates	18 g	90%
Carbohydrate	1 g	0%
of which Sugars	0.5 g	1%
Protein	16 g	32%
Salt	2 g	33%

SUPPLEMENTARY NUTRITIONAL INFORMATION

HANDLING & STORAGE INFORMATION

Directions For Use	Once opened keep refrigerated & use within 3 days. Do not exceed the expiry date
Storage Instructions	Keep Refrigerated
Shelf Life from Time of Production	195 Days

ACCREDITATIONS/
CERTIFICATIONS/
ASSURANCE
SCHEMES
ORIGIN

BRCGS Certified		Other Accreditation	
Product Country of Origin		Greece	
Additional Origin Details			
Greece			
Origin of the Primary Ingredient			

PRODUCT
CHARACTERISTICS

Standards Testing

Do you undertake trend analysis of microbiological results?	No	Is shelf life testing undertaken?	No		
Microbiological Standards					
Organism	Description	Frequency	Target	Maximum	Sample (g or ml)
E. Coli (cfu/g or ml)		Monthly	<10	100	100
Enterobacteriaceae (cfu/g or ml)		Monthly	<100	1000	100
Listeria SPP (cfu/g or ml)		Monthly	=0	0	25
Listeria Monocytogenes (cfu/g or ml)	Absent in 25g	Monthly	=0	0	25
Staphylococcus Aureus (cfu/g or ml)		Monthly	<20	100	100
Salmonella (cfu/g or ml)	Absent in 25g	Monthly	=0	0	100

SUPPLEMENTARY INFORMATION

Pasteurised	Yes
-------------	-----

ORGANOLEPTICS

Appearance

White to ivory.

Taste

Salty, slightly acidic

Texture

Semi hard cheese with irregular holes typical to Feta, with wetness from the brine.

CONFIGURATION

Case Configuration		Inner Pack Configuration	
Total Quantity of Inner Components in Outer Case	6 Units		
Is the Outer Case Splittable?	Yes		

PRODUCT
WEIGHTS

Inner Component	
Variable Weight Consumer Item	No
Inner Component Weight	900 g
Outer Case	
Outer Case Gross Weight	5.52 kg
Outer Case Net Weight	5.4 kg

PRODUCT DIMENSIONS	Inner Component						
	Inner Component Depth		134 mm				
	Inner Component Width		145 mm				
	Inner Component Height		75 mm				
PALLET INFORMATION	Outer Case						
	Outer Case Depth		360 mm				
	Outer Case Width		265 mm				
	Outer Case Height		125 mm				
	Quantity of Cases Per Pallet Layer		9 Cases		Pallet Type		Euro Pallet
	Quantity of Layers Per Pallet		12 Layers		Pallet Height		1.3 MTR
	Quantity of Cases Per Pallet		108 Cases		Pallet Gross Weight		660 kg
PACKAGING	Inner Component Packaging						
	Type	Materials	Weight	Recycled Plastic %	Recyclable	Returnable	Composite
	Film	Plastic	15 g	- %			
	Outer Case Packaging						
	Type	Materials	Weight	Recycled Plastic %	Recyclable	Returnable	Composite
	Case	Paper/Cardboard	200 g	- %			
SAFETY & WARNINGS							
OTHER INFORMATION	Commodity Code		04069032		Identification/Health Marks		GR 01.2.306 EU
	Manufacturer Comments						
	N/A						
CONTACT INFORMATION	Address						
	Futura Foods UK Ltd						
	The Priory						
	Long Street						
	Dursley						
	GL11 4HR						
	England						
	P: (Phone) 01666 890500						

The information on the [Erudus System](#) has been supplied by the manufacturers of the products and, whilst the owners of the Erudus System take steps to ensure the information is regularly updated, they give no warranty and no guarantee that the information is accurate. Product information and ingredients may change, please always read product labels carefully in addition to using the information provided by Erudus.

We do not accept liability for any inaccuracies or incorrect information contained on this site.
Please visit <http://www.erudus.com/terms-and-conditions> for full terms and conditions.