

TRU107

# TRUEfoods White Chicken Stock 2.5kg

White Chicken Stock

## PRODUCT DESCRIPTION

Fresh chicken stock made in the traditional way of slowly cooking chicken bones, herbs and spring water to create a fully flavoured clear natural stock.

Brand	TRUEfoods Ltd
Manufacturer Product Code	WS/S/CSW003
Product Type	Food
Product Category	Gravy / Bouillon
Storage Type	Chilled
Erudus ID	a0d0e141d03340f890f2983789f4ddf7
Specification Type	Generic



Inner Component GTIN	5060161210880
Outer Case GTIN	5060161212556

## INGREDIENTS

**Ingredient Declaration**  
Spring water, chicken bones (32%), garlic, thyme, black peppercorns, bay leaves.

## ALLERGENS

<i>Product Contains:</i>	
Celery/Celeriac	No
Cereals Containing Gluten	No
Barley	No
Oats	No
Rye	No
Wheat (including Spelt and Khorasan)	No
Crustacea	No
Eggs	No
Fish	No
Lupin	No
Milk	No
Molluscs	No
Mustard	No
Nuts (Tree)	No
Almond nuts	No
Brazil nuts	No
Cashew nuts	No
Hazelnuts	No
Macadamia (Queensland) nuts	No
Pecan nuts	No
Pistachio nuts	No
Walnuts	No
Peanuts	No
Sesame Seeds	No
Soybeans	No
Sulphur Dioxide and Sulphites	No

**Additional Allergen Information**  
Not specified

SUPPLEMENTARY INGREDIENT INFORMATION	Palm Oil	No
	Hydrogenated Vegetable Oil/Fat	No
	GM Protein/DNA	No

ADDITIVES

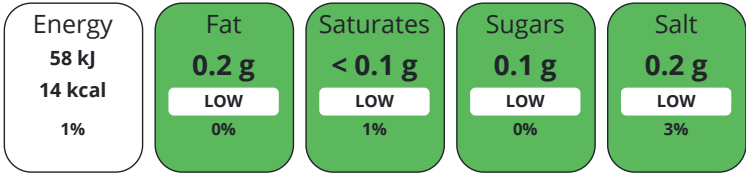
Product Contains:

Artificial Antioxidants	No	Artificial Flavourings	No
Artificial Colours	No	Artificial Preservatives	No
Artificial Flavour Enhancers	No	Artificial Sweeteners	No
Vegan Diet	No	Vegetarian Diet	No
Halal Diet	No	Kosher Diet	No

DIET SUITABILITY

NUTRITIONAL  
INFORMATION AS  
SOLD

Each 100g/ml portion contains:



of your reference intake.

Typical values per 100g/ml : Energy 14kcal / 58kJ

Nutrient	per 100g	RI per 100g
Energy (kJ)	58 kJ	1%
Energy (kcal)	14 kcal	1%
Fat	0.2 g	0%
of which Saturates	< 0.1 g	1%
Carbohydrate	< 0.5 g	0%
of which Sugars	0.1 g	0%
Fibre	0.6 g	
Protein	3 g	6%
Salt	0.2 g	3%

SUPPLEMENTARY  
NUTRITIONAL  
INFORMATION

HANDLING &  
STORAGE  
INFORMATION

Directions For Use

Empty contents in to a saucepan. Heat over a moderate to high heat stirring occasionally.

Storage Instructions

Chilled – Keep refrigerated at 5°C or below. Use within 3 days of opening. Frozen – Freeze immediately. Keep frozen at -18°C or below. May be kept frozen for up to 12 months from date of production. Use within 3 days of defrosting. Do not refreeze once defrosted.

Storage Instructions After Opening

Chilled – Keep refrigerated at 5°C or below. Use within 3 days of opening. Frozen – Use within 3 days of defrosting. Do not refreeze once defrosted.

Shelf Life from Time of Production	35 Days
Shelf Life From Opening	3 Days

BRCGS Certified
Other Accreditation

BRCGS Food Safety
-------------------

ACCREDITATIONS/  
CERTIFICATIONS/  
ASSURANCE  
SCHEMES  
ORIGIN

Product Country of Origin	United Kingdom
Additional Origin Details	Not specified
Origin of the Primary Ingredient	

PRODUCT CHARACTERISTICS	Standards Testing							
	Do you undertake trend analysis of microbiological results?		Yes		Is shelf life testing undertaken?		Yes	
	Microbiological Standards							
	Organism	Description	Frequency	Target	Maximum	Sample (g or ml)		
	E. Coli (cfu/g or ml)		Annually	=0	10	100		
	Listeria SPP (cfu/g or ml)	absent in 25g	Annually	=0	0	100		
	Listeria Monocytogenes (cfu/g or ml)	absent in 25g	Annually	=0	0	100		
	Staphylococcus Aureus (cfu/g or ml)		Annually	<20	20	100		
	Salmonella (cfu/g or ml)		absent in 25g	Annually	=0	0	100	
	Aerobic Colony Count (ACC) (cfu/g or ml)		Annually	<1000	1000	100		
CONFIGURATION	HAZARD CONTROLS							
	Metal Detection		Yes		Sieving		Yes	
	Case Configuration			Inner Pack Configuration				
	Total Quantity of Inner Components in Outer Case		5 Units					
PRODUCT WEIGHTS	Is the Outer Case Splittable?		No					
	Inner Component							
	Variable Weight Consumer Item		Yes					
	Outer Case							
PRODUCT DIMENSIONS	Outer Case Gross Weight		13.1 kg					
	Outer Case Net Weight		12.5 kg					
	Inner Component							
	Inner Component Depth		200 mm					
PALLET INFORMATION	Inner Component Width		400 mm					
	Inner Component Height		60 mm					
	Outer Case							
	Outer Case Depth		350 mm					
PACKAGING	Outer Case Width		252 mm					
	Outer Case Height		300 mm					
	Quantity of Cases Per Pallet Layer		11 Cases		Pallet Type		Euro Pallet	
	Quantity of Layers Per Pallet		5 Layers		Pallet Height		1.7 MTR	
PACKAGING	Quantity of Cases Per Pallet		55 Cases		Pallet Gross Weight		745 kg	
	Inner Component Packaging							
	Type	Materials	Weight	Recycled Plastic %	Recyclable	Returnable	Composite	
	Bag	Plastic	23 g	- %				
PACKAGING	Outer Case Packaging							
	Type	Materials	Weight	Recycled Plastic %	Recyclable	Returnable	Composite	
	Case	Paper/Cardboard	450 g	- %				
	Case	Other	5 g	- %				

Transport Packaging

Type	Materials	Weight	Recycled Plastic %	Recyclable	Returnable	Composite
Other	Plastic	200 g	- %			
Other	Paper/Cardboard	950 g	- %			
Other	Wood	25000 g	- %			

SAFETY &  
WARNINGS

OTHER  
INFORMATION

Identification/Health Marks	GB OH 041
-----------------------------	-----------

Manufacturer Comments

Not specified

CONTACT  
INFORMATION

Address  
TRUEfoods Ltd  
Unit 9, Barker Business Park  
Hallikeld Close  
Melmerby  
North Yorkshire  
HG4 5GZ  
United Kingdom

P: (Phone) 01765 640 927

The information on the [Erudus System](#) has been supplied by the manufacturers of the products and, whilst the owners of the Erudus System take steps to ensure the information is regularly updated, they give no warranty and no guarantee that the information is accurate. Product information and ingredients may change, please always read product labels carefully in addition to using the information provided by Erudus.

We do not accept liability for any inaccuracies or incorrect information contained on this site.  
Please visit <http://www.erudus.com/terms-and-conditions> for full terms and conditions.