

Changed Dec 26, 2024 09:24

Reviewed Dec 26, 2024 09:24

Erudus ID cbef4557bfdd419aa2a0f7e61783007f

Version 2.0

Status Published

TRU112

TRUEfoods Fragrant Thai Broth 2.5kg

Fragrant Thai Broth

PRODUCT DESCRIPTION

A versatile broth perfect for warming and drinking on its own or add pak choi, bean sprouts and finish with fresh coriander. A super simple flavoursome base for green or red Thai curry or broths. Full of flavour.

Brand	TRUEfoods Ltd
Manufacturer Product Code	WS/S/FTS112
Product Type	Food
Product Category	Gravy / Bouillon
Storage Type	Chilled
Erudus ID	cbef4557bfdd419aa2a0f7e61783007f
Specification Type	Generic



Inner Component GTIN	5060161215984
Outer Case GTIN	5060161215991



INGREDIENTS

Ingredient Declaration

Chicken stock (spring water, chicken bones (32%), garlic, thyme, black peppercorns, bay leaves), lemongrass, ginger, tamarind, spring onions, lime juice, garlic, red chilli, kaffir lime leaves, coriander, sugar, FISH sauce (water, anchovy [FISH], salt, sugar).

ALLERGENS

Product Contains:

Celery/Celeriac	No
Cereals Containing Gluten	No
Barley	No
Oats	No
Rye	No
Wheat (including Spelt and Khorasan)	No
Crustacea	No
Eggs	No
Fish	Yes
Lupin	No
Milk	No
Molluscs	No

Mustard	No
Nuts (Tree)	No
Almond nuts	No
Brazil nuts	No
Cashew nuts	No
Hazelnuts	No
Macadamia (Queensland) nuts	No
Pecan nuts	No
Pistachio nuts	No
Walnuts	No
Peanuts	No
Sesame Seeds	No
Soybeans	No
Sulphur Dioxide and Sulphites	No

SUPPLEMENTARY
INGREDIENT
INFORMATION

Palm Oil	No
Hydrogenated Vegetable Oil/Fat	No
GM Protein/DNA	No

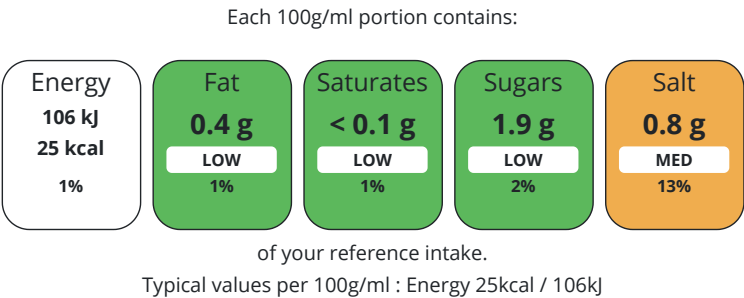
ADDITIVES

Product Contains:			
Artificial Antioxidants	No	Artificial Flavourings	No
Artificial Colours	No	Artificial Preservatives	No
Artificial Flavour Enhancers	No	Artificial Sweeteners	No

DIET SUITABILITY

Vegan Diet	No	Vegetarian Diet	No
Halal Diet	No	Kosher Diet	No

NUTRITIONAL
INFORMATION AS
SOLD



Nutrient	per 100g	RI per 100g
Energy (kJ)	106 kJ	1%
Energy (kcal)	25 kcal	1%
Fat	0.4 g	1%
of which Saturates	< 0.1 g	1%
Carbohydrate	2 g	1%
of which Sugars	1.9 g	2%
Fibre	0.6 g	
Protein	3.7 g	7%
Salt	0.8 g	13%

SUPPLEMENTARY
NUTRITIONAL
INFORMATION

HANDLING &
STORAGE
INFORMATION

Directions For Use

Empty contents into a saucepan. Heat over a moderate to high heat stirring occasionally.

Storage Instructions

Chilled – Keep refrigerated at 5°C or below. Use within 3 days of opening. Frozen – Freeze immediately. Keep frozen at -18°C or below. May be kept frozen for up to 12 months from date of production. Use within 3 days of defrosting. Do not refreeze once defrosted.

Storage Instructions After Opening

Chilled – Keep refrigerated at 5°C or below. Use within 3 days of opening. Frozen – Use within 3 days of defrosting. Do not refreeze once defrosted.

Shelf Life from Time of Production	26 Days
Shelf Life From Opening	3 Days

ACCREDITATIONS/
CERTIFICATIONS/
ASSURANCE
SCHEMES

BRCGS Certified	BRCGS Food Safety
-----------------	-------------------

ORIGIN	Product Country of Origin		United Kingdom				
	Origin of the Primary Ingredient						
PRODUCT CHARACTERISTICS	Standards Testing						
	Do you undertake trend analysis of microbiological results?		Yes		Is shelf life testing undertaken?		Yes
	Microbiological Standards						
	Organism	Description	Frequency	Target	Maximum	Sample (g or ml)	
	Bacillus Cereus (cfu/g or ml)		Annually	<100	100	100	
	E. Coli (cfu/g or ml)		Annually	=0	10	100	
	Listeria SPP (cfu/g or ml)	Absent in 25g	Annually	=0	0	100	
	Listeria Monocytogenes (cfu/g or ml)	Absent in 25g	Annually	=0	0	100	
	Staphylococcus Aureus (cfu/g or ml)		Annually	<20	20	100	
	Salmonella (cfu/g or ml)		Absent in 25g	Annually	=0	0	100
Aerobic Colony Count (ACC) (cfu/g or ml)		Annually	<1000	1000	100		
HAZARD CONTROLS							
	Metal Detection		Yes		Sieving		Yes
CONFIGURATION	Case Configuration			Inner Pack Configuration			
	Total Quantity of Inner Components in Outer Case		5 Units				
	Is the Outer Case Splittable?		No				
PRODUCT WEIGHTS	Inner Component						
	Variable Weight Consumer Item		Yes				
	Inner Component Weight		2.5 kg				
	Outer Case						
	Outer Case Gross Weight		13.1 kg				
	Outer Case Net Weight		12.5 kg				
PRODUCT DIMENSIONS	Inner Component						
	Inner Component Depth		200 mm				
	Inner Component Width		400 mm				
	Inner Component Height		60 mm				
	Outer Case						
	Outer Case Depth		350 mm				
	Outer Case Width		252 mm				
	Outer Case Height		300 mm				
PALLET INFORMATION	Quantity of Cases Per Pallet Layer		11 Cases		Pallet Type		Euro Pallet
	Quantity of Layers Per Pallet		5 Layers		Pallet Height		1.7 MTR
	Quantity of Cases Per Pallet		55 Cases		Pallet Gross Weight		745 kg
PACKAGING	Inner Component Packaging						
	Type	Materials	Weight	Recycled Plastic %	Recyclable	Returnable	Composite
	Bag	Plastic	23 g	- %			

SAFETY &
WARNINGS

OTHER
INFORMATION
CONTACT
INFORMATION

Outer Case Packaging

Type	Materials	Weight	Recycled Plastic %	Recyclable	Returnable	Composite
Case	Paper/Cardboard	450 g	- %			
Case	Other	5 g	- %			

Transport Packaging

Type	Materials	Weight	Recycled Plastic %	Recyclable	Returnable	Composite
Other	Plastic	200 g	- %			
Other	Paper/Cardboard	950 g	- %			
Other	Wood	25000 g	- %			

Identification/Health Marks	GB OH 041
-----------------------------	-----------

Address
TRUEfoods Ltd
Unit 9, Barker Business Park
Hallikeld Close
Melmerby
North Yorkshire
HG4 5GZ
United Kingdom

P: (Phone) 01765 640 927

The information on the [Erudus System](#) has been supplied by the manufacturers of the products and, whilst the owners of the Erudus System take steps to ensure the information is regularly updated, they give no warranty and no guarantee that the information is accurate. Product information and ingredients may change, please always read product labels carefully in addition to using the information provided by Erudus.

We do not accept liability for any inaccuracies or incorrect information contained on this site.
Please visit <http://www.erudus.com/terms-and-conditions> for full terms and conditions.