

TUA108

Tortelloni Peas & Mint / Durum Wheat Pasta

Frozen 3x1kg

Tortelloni Peas & Mint / Durum Wheat Pasta 3x1kg

PRODUCT DESCRIPTION

Fresh Pasta Filled with Peas & Mint

Brand	La Tua Pasta
Manufacturer Product Code	TL048173000F
Product Type	Food
Product Category	Pasta, Rice and Noodles
Storage Type	Frozen
Erudus ID	908704b34190493f98610bfce7741a69
Specification Type	Generic
Inner Component GTIN	5055430413031
Outer Case GTIN	5055430413031



INGREDIENTS

Ingredient Declaration
Pasta (56%): Durum **WHEAT** Flour, Water.
Filling (44%): Peas (66%), Shallots, Breadcrumbs (**WHEAT** Flour, Salt, Yeast), Olive Oil, Water, Salt, Mint (3%).
Dusted with rice flour

ALLERGENS

Product Contains:

Celery/Celeriac	May Contain
Cereals Containing Gluten	Yes
Barley	No
Oats	No
Rye	No
Wheat (including Spelt and Khorasan)	Yes
Crustacea	May Contain
Eggs	May Contain
Fish	May Contain
Lupin	No
Milk	May Contain
Molluscs	No

Mustard	May Contain
Nuts (Tree)	May Contain
Almond nuts	No
Brazil nuts	No
Cashew nuts	No
Hazelnuts	May Contain
Macadamia (Queensland) nuts	No
Pecan nuts	No
Pistachio nuts	May Contain
Walnuts	No
Peanuts	No
Sesame Seeds	No
Soybeans	May Contain
Sulphur Dioxide and Sulphites	No

Risk Source:

Additional Allergen Information

Produced in a factory that handles Wheat, Egg, Milk, Nut, Mustard, Crustacean, Fish, Celery and Soy.

SUPPLEMENTARY
INGREDIENT
INFORMATION

Palm Oil	No
Hydrogenated Vegetable Oil/Fat	No
GM Protein/DNA	No

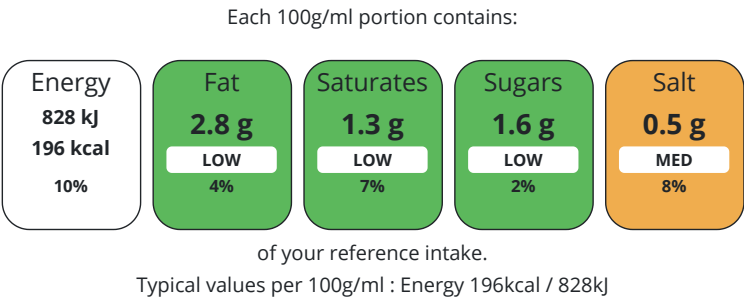
ADDITIVES

Product Contains:			
Artificial Antioxidants	No	Artificial Flavourings	No
Artificial Colours	No	Artificial Preservatives	No
Artificial Flavour Enhancers	No	Artificial Sweeteners	No

DIET SUITABILITY

Vegan Diet	Suitable for	Vegetarian Diet	Suitable for
Halal Diet	No	Kosher Diet	No

NUTRITIONAL
INFORMATION AS
SOLD



Nutrient	per 100g	RI per 100g	per 125g serving	RI per 125g serving
Energy (kJ)	828 kJ	10%	1035	12%
Energy (kcal)	196 kcal	10%	245	12%
Fat	2.8 g	4%	3.5 g	5%
of which Saturates	1.3 g	7%	1.63 g	8%
Carbohydrate	33.8 g	13%	42.25 g	16%
of which Sugars	1.6 g	2%	2 g	2%
Protein	7.4 g	15%	9.25 g	19%
Salt	0.5 g	8%	0.63 g	11%

Serving Size	125 g
--------------	-------

SUPPLEMENTARY
NUTRITIONAL
INFORMATION

HANDLING &
STORAGE
INFORMATION

Directions For Use	Cooking Instructions: Cook for 5-6 minutes in boiling water.
Storage Instructions	Keep Frozen at -18 C. To maintain quality do not defrost, cook straight from frozen.
Shelf Life from Time of Production	547 Days

ACCREDITATIONS/
CERTIFICATIONS/
ASSURANCE
SCHEMES
ORIGIN

BRCGS Certified	
Product Country of Origin	United Kingdom
Additional Origin Details	Durum Wheat Flour Italy Water UK Rice Flour (for dusting) UK Peas UK Shallots UK Breadcrumbs Italy Olive Oil Italy Water UK Salt Turkey Mint France
Origin of the Primary Ingredient	

PRODUCT
CHARACTERISTICS

Standards Testing

	Do you undertake trend analysis of microbiological results?	Yes	Is shelf life testing undertaken?				Yes
	Microbiological Standards						
	Organism	Description	Frequency	Target	Maximum	Sample (g or ml)	
	Bacillus Cereus (cfu/g or ml)		Monthly	<100	100000	200	
	Clostridium Perfringens (cfu/g or ml)		Monthly	<10	10000	200	
	E. Coli (cfu/g or ml)		Monthly	<10	100	200	
	Listeria Monocytogenes (cfu/g or ml)		Monthly	<0	0	200	
	Staphylococcus Aureus (cfu/g or ml)		Monthly	<100	10000	200	
	Salmonella (cfu/g or ml)		Monthly	<0	0	200	
CONFIGURATION	Case Configuration		Inner Pack Configuration				
PRODUCT WEIGHTS	Total Quantity of Inner Components in Outer Case	3 Units					
	Inner Component						
	Variable Weight Consumer Item	No					
	Inner Component Weight	1 kg					
	Outer Case						
	Outer Case Gross Weight	3.23 kg					
PRODUCT DIMENSIONS	Outer Case Net Weight	3 kg					
	Inner Component						
	Inner Component Depth	310 mm					
	Inner Component Width	290 mm					
	Inner Component Height	0 mm					
	Outer Case						
PALLET INFORMATION	Outer Case Depth	320 mm					
	Outer Case Width	300 mm					
	Outer Case Height	130 mm					
	Quantity of Cases Per Pallet Layer	12 Cases	Pallet Height		1 MTR		
	Quantity of Layers Per Pallet	12 Layers					
	Quantity of Cases Per Pallet	144 Cases					
PACKAGING	Inner Component Packaging						
	Type	Materials	Weight	Recycled Plastic %	Recyclable	Returnable	Composite
	Bag	Plastic	17 g	- %			
	Outer Case Packaging						
	Type	Materials	Weight	Recycled Plastic %	Recyclable	Returnable	Composite
	Case	Paper/Cardboard	234 g	- %			
SAFETY & WARNINGS							
OTHER INFORMATION							

CONTACT
INFORMATION

Address
La Tua Pasta
Unit 4 Nucleus Park
Central Way
London
London
NW10 7XT
United Kingdom

P: (Phone) +442089618024

Complaints Contact
Nicolle Lathrop
Quality Manager
foodsafety@latuapasta.com

P: (Phone) +442089618024

Technical Contact
Nicolle Lathrop
Quality Manager
foodsafety@latuapasta.com

P: (Phone) +442089618024

Commercial Contact
Jessica Scudetti
Jessica.scudetti@latuapasta.com

P: (Phone) +442089618024

The information on the [Erudus System](#) has been supplied by the manufacturers of the products and, whilst the owners of the Erudus System take steps to ensure the information is regularly updated, they give no warranty and no guarantee that the information is accurate. Product information and ingredients may change, please always read product labels carefully in addition to using the information provided by Erudus.

We do not accept liability for any inaccuracies or incorrect information contained on this site.
Please visit <http://www.erudus.com/terms-and-conditions> for full terms and conditions.