

Changed Jul 14, 2025 12:17

Reviewed Jul 14, 2025 12:17

Erudus ID 30f6ef95ec5b48929bc4414eec54c2ec

Version 3.0

Status Published

TUA120

Tortelloni Lobster & Crab , Egg Pasta Frozen 3x1Kg

Tortelloni Lobster & Crab 3x1kg

PRODUCT DESCRIPTION

Egg Pasta Filled with Lobster and Crab

Brand	La Tua Pasta
Manufacturer Product Code	TL0853000F
Product Type	Food
Product Category	Pasta, Rice and Noodles
Storage Type	Frozen
Erudus ID	30f6ef95ec5b48929bc4414eec54c2ec
Specification Type	Generic



INGREDIENTS

Ingredient Declaration

Pasta (56%): Flour 00 (**WHEAT**, Calcium, Iron, Niacin, Thiamine), Pasteurised **EGG** (30%), Durum **WHEAT** Flour, Salt, Water.

Filling (44%): Lobster (**CRUSTACEANS**) (19%), Crab Meat (**CRUSTACEANS**) (19%) (Hand picked; Some shell may remain), Whitefish (**FISH**), Ricotta Cheese (**MILK**), Tomatoes Concentrate, Olive Oil, White Wine, Parsley, Unsalted Butter (**MILK**), Garlic, Black Pepper, Salt.

Dusted with rice flour

ALLERGENS

Product Contains:

Celery/Celeriac	May Contain
Cereals Containing Gluten	Yes
Barley	No
Oats	No
Rye	No
Wheat (including Spelt and Khorasan)	Yes
Crustacea	Yes
Eggs	Yes
Fish	Yes
Lupin	No
Milk	Yes
Molluscs	No

Mustard	May Contain
Nuts (Tree)	May Contain
Almond nuts	No
Brazil nuts	No
Cashew nuts	No
Hazelnuts	May Contain
Macadamia (Queensland) nuts	No
Pecan nuts	No
Pistachio nuts	May Contain
Walnuts	No
Peanuts	No
Sesame Seeds	No
Soybeans	May Contain
Sulphur Dioxide and Sulphites	No

Risk Source:

Additional Allergen Information

Produced in a factory that handles Wheat, Egg, Milk, Nut, Mustard, Crustacean, Fish, Celery and Soy.

SUPPLEMENTARY
INGREDIENT
INFORMATION

Palm Oil	No
Hydrogenated Vegetable Oil/Fat	No
GM Protein/DNA	No

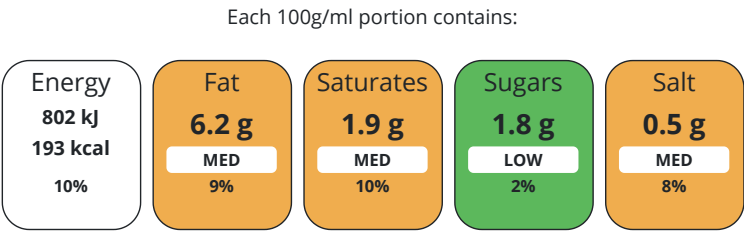
ADDITIVES

Product Contains:			
Artificial Antioxidants	No	Artificial Flavourings	No
Artificial Colours	No	Artificial Preservatives	No
Artificial Flavour Enhancers	No	Artificial Sweeteners	No

DIET SUITABILITY

Vegan Diet	No	Vegetarian Diet	No
Halal Diet	No	Kosher Diet	No

NUTRITIONAL
INFORMATION AS
SOLD



of your reference intake.
Typical values per 100g/ml : Energy 193kcal / 802kJ

Nutrient	per 100g	RI per 100g	per 125g serving	RI per 125g serving
Energy (kJ)	802 kJ	10%	1002.5	12%
Energy (kcal)	193 kcal	10%	241.25	12%
Fat	6.2 g	9%	7.75 g	11%
of which Saturates	1.9 g	10%	2.38 g	12%
Carbohydrate	19.4 g	7%	24.25 g	9%
of which Sugars	1.8 g	2%	2.25 g	3%
Protein	15.2 g	30%	19 g	38%
Salt	0.5 g	8%	0.63 g	11%

Serving Size	125 g
--------------	-------

SUPPLEMENTARY
NUTRITIONAL
INFORMATION

HANDLING &
STORAGE
INFORMATION

Directions For Use	Cook for 5-6 minutes in boiling water.
Storage Instructions	Keep Frozen at -18 C. To maintain quality do not defrost, cook straight from frozen
Shelf Life from Time of Production	547 Days

ACCREDITATIONS/
CERTIFICATIONS/
ASSURANCE
SCHEMES
ORIGIN

BRCGS Certified	
Product Country of Origin	United Kingdom
Additional Origin Details	Flour 00 - Italy Pasteurised Egg - UK Durum Wheat Flour - Italy Salt - UK Water - UK Rice flour (for dusting) - UK Lobster - Canada Crab Meat - UK Whitefish - Vietnam Ricotta Cheese - Italy-UK Tomatoes - Portugal Olive Oil (Extra Virgin) - Italy White Wine - Italy Parsley - France Butter - UK Garlic - China Black Pepper - Vietnam Salt - UK
Origin of the Primary Ingredient	Italy

PRODUCT CHARACTERISTICS	Standards Testing						
	Do you undertake trend analysis of microbiological results?	Yes	Is shelf life testing undertaken?	Yes			
	Microbiological Standards						
	Organism	Description	Frequency	Target	Maximum	Sample (g or ml)	
	Bacillus Cereus (cfu/g or ml)		Monthly	<100	100000	200	
	Clostridium Perfringens (cfu/g or ml)		Monthly	<10	10000	200	
	E. Coli (cfu/g or ml)		Monthly	<10	100	200	
	Listeria Monocytogenes (cfu/g or ml)		Monthly	<0	0	200	
	Staphylococcus Aureus (cfu/g or ml)		Monthly	<100	10000	200	
	Salmonella (cfu/g or ml)		Monthly	<0	0	200	
CONFIGURATION	Case Configuration		Inner Pack Configuration				
	Total Quantity of Inner Components in Outer Case	3 Units					
PRODUCT WEIGHTS	Inner Component						
	Variable Weight Consumer Item	No					
	Inner Component Weight	1 kg					
	Outer Case						
	Outer Case Gross Weight	3.3 kg					
	Outer Case Net Weight	3 kg					
PRODUCT DIMENSIONS	Inner Component						
	Inner Component Depth	310 mm					
	Inner Component Width	290 mm					
	Inner Component Height	3 mm					
	Outer Case						
	Outer Case Depth	325 mm					
	Outer Case Width	300 mm					
	Outer Case Height	130 mm					
	PALLET INFORMATION	Quantity of Cases Per Pallet Layer	144 Cases		Pallet Height	1.82 MTR	
		Quantity of Layers Per Pallet	12 Layers				
Quantity of Cases Per Pallet		12 Cases					
PACKAGING	Inner Component Packaging						
	Type	Materials	Weight	Recycled Plastic %	Recyclable	Returnable	Composite
	Bag	Plastic	51 g	- %			
	Outer Case Packaging						
	Type	Materials	Weight	Recycled Plastic %	Recyclable	Returnable	Composite
	Case	Paper/Cardboard	234 g	- %			
SAFETY & WARNINGS							
OTHER INFORMATION	Identification/Health Marks				GB FB116		

CONTACT
INFORMATION

Address
La Tua Pasta
Unit 4 Nucleus Park
Central Way
London
London
NW10 7XT
United Kingdom

P: (Phone) +442089618024

Complaints Contact
Nicolle Lathrop
Quality Manager
foodsafety@latuapasta.com

P: (Phone) +442089618024

Technical Contact
Nicolle Lathrop
Quality Manager
foodsafety@latuapasta.com

P: (Phone) +442089618024

Commercial Contact
Jessica Scudetti
Jessica.scudetti@latuapasta.com

P: (Phone) +442089618024

The information on the [Erudus System](#) has been supplied by the manufacturers of the products and, whilst the owners of the Erudus System take steps to ensure the information is regularly updated, they give no warranty and no guarantee that the information is accurate. Product information and ingredients may change, please always read product labels carefully in addition to using the information provided by Erudus.

We do not accept liability for any inaccuracies or incorrect information contained on this site.
Please visit <http://www.erudus.com/terms-and-conditions> for full terms and conditions.