

TUA130

Ravioli Spinach & Ricotta / Egg Pasta 3x1kg Frozen

Ravioli Spinach & Ricotta / Egg Pasta 3x1kg

PRODUCT DESCRIPTION

Fresh Egg Pasta Filled with Spinach and Ricotta

Brand	La Tua Pasta
Manufacturer Product Code	RA001013000F
Product Type	Food
Product Category	Pasta, Rice and Noodles
Storage Type	Frozen
Erudus ID	45766876abd44003996c47a074dec923
Specification Type	Generic
Inner Component GTIN	5055430400451
Outer Case GTIN	5055430400451



INGREDIENTS

Ingredient Declaration

Pasta (50%): Flour 00 (**WHEAT**), Pasteurised **EGG** (30%), Durum **WHEAT** Flour, Salt, Water.

Filling (50%): Spinach (40%), Ricotta (**MILK**) (40%), Italian grated cheese (**MILK**, Salt, Vegetarian Rennet, Preservative **EGG** Lysozyme) Salt, Nutmeg, Garlic, Olive Oil.

Dusted with rice flour

ALLERGENS

Product Contains:

Celery/Celeriac	May Contain
Cereals Containing Gluten	Yes
Barley	No
Oats	No
Rye	No
Wheat (including Spelt and Khorasan)	Yes
Crustacea	May Contain
Eggs	Yes
Fish	May Contain
Lupin	No
Milk	Yes
Molluscs	No

Mustard	May Contain
Nuts (Tree)	May Contain
Almond nuts	No
Brazil nuts	No
Cashew nuts	No
Hazelnuts	May Contain
Macadamia (Queensland) nuts	No
Pecan nuts	No
Pistachio nuts	May Contain
Walnuts	No
Peanuts	No
Sesame Seeds	No
Soybeans	May Contain
Sulphur Dioxide and Sulphites	No

Risk Source:

SUPPLEMENTARY
INGREDIENT
INFORMATION

Additional Allergen Information

Produced in a factory that handles Wheat, Egg, Milk, Nut, Mustard, Crustacean, Fish, Celery and Soy.

ADDITIVES

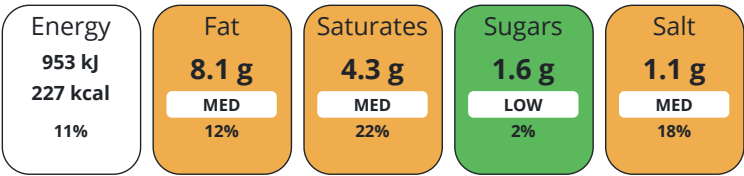
Product Contains:

Artificial Antioxidants	No	Artificial Flavourings	No
Artificial Colours	No	Artificial Preservatives	No
Artificial Flavour Enhancers	No	Artificial Sweeteners	No
Vegan Diet	No	Vegetarian Diet	Suitable for
Halal Diet	No	Kosher Diet	No

DIET SUITABILITY

NUTRITIONAL
INFORMATION AS
SOLD

Each 100g/ml portion contains:



of your reference intake.

Typical values per 100g/ml : Energy 227kcal / 953kJ

Nutrient	per 100g	RI per 100g	per 125g serving	RI per 125g serving
Energy (kJ)	953 kJ	11%	1191.25	14%
Energy (kcal)	227 kcal	11%	283.75	14%
Fat	8.1 g	12%	10.13 g	14%
of which Saturates	4.3 g	22%	5.38 g	27%
Carbohydrate	24.9 g	10%	31.13 g	12%
of which Sugars	1.6 g	2%	2 g	2%
Protein	12.8 g	26%	16 g	32%
Salt	1.1 g	18%	1.38 g	23%

Serving Size	125 g
--------------	-------

SUPPLEMENTARY
NUTRITIONAL
INFORMATION

HANDLING &
STORAGE
INFORMATION

Directions For Use

Cook for 5-6 minutes in boiling water.

Storage Instructions

Keep Frozen at -18 C. To maintain quality do not defrost, cook straight from frozen.

Shelf Life from Time of Production	547 Days
------------------------------------	----------

BRCGS Certified

ACCREDITATIONS/
CERTIFICATIONS/
ASSURANCE
SCHEMES

ORIGIN	Product Country of Origin		United Kingdom					
PRODUCT CHARACTERISTICS	Additional Origin Details							
	Flour 00 Italy-UK Pasteurised Egg UK Durum Wheat Flour Italy-UK Salt Turkey Water UK Rice flour (for dusting) Italy-UK Spinach							
	Belgium Ricotta Cheese Italy-UK Italian grated cheese Italy Salt Turkey Nutmeg Indonesia Garlic UK Olive Oil (Extra Virgin) Italy							
	Origin of the Primary Ingredient							
	Standards Testing							
	Do you undertake trend analysis of microbiological results?		Yes	Is shelf life testing undertaken?			Yes	
	Microbiological Standards							
	Organism		Description	Frequency	Target	Maximum	Sample (g or ml)	
	Bacillus Cereus (cfu/g or ml)			Monthly	<100	100000	200	
	Clostridium Perfringens (cfu/g or ml)			Monthly	<10	10000	200	
CONFIGURATION	E. Coli (cfu/g or ml)			Monthly	<10	100	200	
	Listeria Monocytogenes (cfu/g or ml)			Monthly	<0	0	200	
	Staphylococcus Aureus (cfu/g or ml)			Monthly	<100	10000	200	
	Salmonella (cfu/g or ml)			Monthly	<0	0	200	
	Case Configuration			Inner Pack Configuration				
	Total Quantity of Inner Components in Outer Case		3 Units					
	Is the Outer Case Splittable?		Yes					
	PRODUCT WEIGHTS	Inner Component						
		Variable Weight Consumer Item		No				
		Inner Component Weight		1 kg				
Net Drained Weight		1 kg						
Outer Case								
Outer Case Gross Weight		3.27 kg						
Outer Case Net Weight		3 kg						
PRODUCT DIMENSIONS		Inner Component						
		Inner Component Depth		310 mm				
		Inner Component Width		290 mm				
	Inner Component Height		3 mm					
	Outer Case							
	Outer Case Depth		325 mm					
	Outer Case Width		300 mm					
	Outer Case Height		135 mm					
	PALLET INFORMATION	Quantity of Cases Per Pallet Layer		12 Cases		Pallet Height		1.82 MTR
		Quantity of Layers Per Pallet		12 Layers		Pallet Gross Weight		495.88 kg
Quantity of Cases Per Pallet		144 Cases						
PACKAGING		Inner Component Packaging						
	Type	Materials	Weight	Recycled Plastic %	Recyclable	Returnable	Composite	
	Bag	Plastic	51 g	- %				

Outer Case Packaging						
SAFETY & WARNINGS	Type	Materials	Weight	Recycled Plastic %	Recyclable	Returnable Composite
	Case	Paper/Cardboard	234 g	- %		
OTHER INFORMATION	Identification/Health Marks					GB FB116
	Manufacturer Comments					
CONTACT INFORMATION	NO COMMENT					
	Address			Technical Contact		
	La Tua Pasta			Nicolle Lathrop		
	Unit 4 Nucleus Park			Quality Manager		
	Central Way			foodsafety@latuapasta.com		
	London			P: (Phone) +442089618024		
	London					
	NW10 7XT					
	United Kingdom					
	P: (Phone) +442089618024					
	Complaints Contact			Commercial Contact		
	Nicolle Lathrop			Jessica Scudetti		
	Quality Manager			Jessica.scudetti@latuapasta.com		
	foodsafety@latuapasta.com			P: (Phone) +442089618024		
	P: (Phone) +442089618024					

The information on the [Erudus System](#) has been supplied by the manufacturers of the products and, whilst the owners of the Erudus System take steps to ensure the information is regularly updated, they give no warranty and no guarantee that the information is accurate. Product information and ingredients may change, please always read product labels carefully in addition to using the information provided by Erudus.

We do not accept liability for any inaccuracies or incorrect information contained on this site.
Please visit <http://www.erudus.com/terms-and-conditions> for full terms and conditions.