

TUA205

Ravioli Mushroom / Egg Pasta Frozen 3x1Kg

Ravioli Mushroom / Egg Pasta 1x1kg

PRODUCT DESCRIPTION

Egg Pasta Filled with Mushroom

Brand	La Tua Pasta
Manufacturer Product Code	RA003013000F
Product Type	Food
Product Category	Pasta, Rice and Noodles
Storage Type	Frozen
Erudus ID	a5e2453480e74dceb0e5098b78c892a1
Specification Type	Generic
Inner Component GTIN	5055430400369
Outer Case GTIN	5055430400369



INGREDIENTS

Ingredient Declaration

Pasta (50%): Flour 00 (WHEAT, Calcium, Iron, Niacin, Thiamine), Pasteurised EGG (30%), Durum WHEAT Flour, Salt, Water.

Filling (50%): Mixed Mushrooms (50%), Ricotta cheese (MILK), Italian grated cheese (MILK, Salt, Vegetarian Rennet, Preservative: EGG Lysozyme), Pasteurised EGG, Parsley, Salt, Garlic, White Wine, Black Pepper.

Dusted with rice flour.

ALLERGENS

<i>Product Contains:</i>			
Celery/Celeriac	May Contain	Mustard	May Contain
Cereals Containing Gluten	Yes	Nuts (Tree)	May Contain
Barley	No	Almond nuts	No
Oats	No	Brazil nuts	No
Rye	No	Cashew nuts	No
Wheat (including Spelt and Khorasan)	Yes	Hazelnuts	May Contain
Crustacea	May Contain	Macadamia (Queensland) nuts	No
Eggs	Yes	Pecan nuts	No
Fish	May Contain	Pistachio nuts	May Contain
Lupin	No	Walnuts	No
Milk	Yes	Peanuts	No
Molluscs	No	Sesame Seeds	No
		Soybeans	May Contain
		Sulphur Dioxide and Sulphites	No

Risk Source:

SUPPLEMENTARY
INGREDIENT
INFORMATION

Additional Allergen Information

Produced in a factory that handles Wheat, Egg, Milk, Nut, Mustard, Crustacean, Fish, Celery and Soy.

ADDITIVES

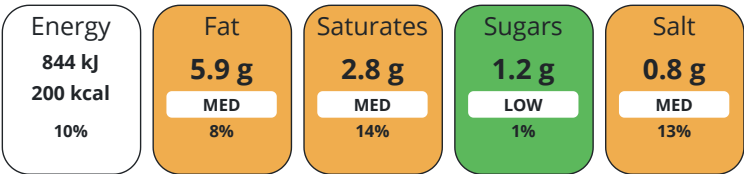
Product Contains:

Artificial Antioxidants	No	Artificial Flavourings	No
Artificial Colours	No	Artificial Preservatives	No
Artificial Flavour Enhancers	No	Artificial Sweeteners	No
Vegan Diet	No	Vegetarian Diet	Suitable for
Halal Diet	No	Kosher Diet	No

DIET SUITABILITY

NUTRITIONAL
INFORMATION AS
SOLD

Each 100g/ml portion contains:



of your reference intake.

Typical values per 100g/ml : Energy 200kcal / 844kJ

Nutrient	per 100g	RI per 100g
Energy (kJ)	844 kJ	10%
Energy (kcal)	200 kcal	10%
Fat	5.9 g	8%
of which Saturates	2.8 g	14%
Carbohydrate	24.6 g	9%
of which Sugars	1.2 g	1%
Protein	11.7 g	23%
Salt	0.8 g	13%

SUPPLEMENTARY
NUTRITIONAL
INFORMATION

HANDLING &
STORAGE
INFORMATION

Directions For Use

Cook for 5-6 minutes in boiling water.

Storage Instructions

Keep Frozen at -18 C. To maintain quality do not defrost, cook straight from frozen.

Shelf Life from Time of Production	547 Days
------------------------------------	----------

ACCREDITATIONS/
CERTIFICATIONS/
ASSURANCE
SCHEMES

BRCGS Certified	SALSA (Safe & Local Supplier Approval)
-----------------	--

ORIGIN	Product Country of Origin		United Kingdom				
	Additional Origin Details						
	Flour 00 Italy-UK Pasteurised Egg UK Durum Wheat Flour Italy-UK Salt Turkey Water UK Rice Flour (for dusting) Italy-UK Mixed Mushrooms Italy Ricotta Cheese Italy-UK Italian grated cheese Italy Pasteurised Egg UK Parsley Italy Salt Turkey Garlic UK White Wine UK Black pepper Vietnam						
	Origin of the Primary Ingredient						
PRODUCT CHARACTERISTICS	Standards Testing						
	Do you undertake trend analysis of microbiological results?		No	Is shelf life testing undertaken?		No	
	Microbiological Standards						
	Organism	Description	Frequency	Target	Maximum	Sample (g or ml)	
	Bacillus Cereus (cfu/g or ml)		Monthly	<100	100000	200	
	Clostridium Perfringens (cfu/g or ml)		Monthly	<10	10000	200	
	E. Coli (cfu/g or ml)		Monthly	<10	100	200	
	Listeria Monocytogenes (cfu/g or ml)		Monthly	<0	0	200	
	Staphylococcus Aureus (cfu/g or ml)		Monthly	<100	10000	200	
	Salmonella (cfu/g or ml)		Monthly	<0	0	200	
CONFIGURATION	Case Configuration			Inner Pack Configuration			
	Total Quantity of Inner Components in Outer Case		1 Units				
	Is the Outer Case Splittable?		No				
PRODUCT WEIGHTS	Inner Component						
	Variable Weight Consumer Item		No				
	Inner Component Weight		1 kg				
	Outer Case						
	Outer Case Gross Weight		3.29 kg				
	Outer Case Net Weight		3 kg				
PRODUCT DIMENSIONS	Inner Component						
	Inner Component Depth		310 mm				
	Inner Component Width		290 mm				
	Inner Component Height		0 mm				
	Outer Case						
	Outer Case Depth		325 mm				
	Outer Case Width		300 mm				
	Outer Case Height		135 mm				
	PALLET INFORMATION	Quantity of Cases Per Pallet Layer		12 Cases	Pallet Height		1.82 MTR
		Quantity of Layers Per Pallet		12 Layers	Pallet Gross Weight		495.88 kg
Quantity of Cases Per Pallet		144 Cases					
PACKAGING	Inner Component Packaging						
	Type	Materials	Weight	Recycled Plastic %	Recyclable	Returnable Composite	
	Bag	Plastic	51 g	- %			

Outer Case Packaging

Type	Materials	Weight	Recycled Plastic %	Recyclable	Returnable	Composite
Case	Paper/Cardboard	234 g	- %			

SAFETY &
WARNINGS

OTHER
INFORMATION

Identification/Health Marks	GB FB116
-----------------------------	----------

Manufacturer Comments

no comment

CONTACT
INFORMATION

Address

La Tua Pasta
Unit 4 Nucleus Park
Central Way
London
London
NW10 7XT
United Kingdom

P: (Phone) +442089618024

Complaints Contact

Nicolle Lathrop
Quality Manager
foodsafety@latuapasta.com

P: (Phone) +442089618024

Technical Contact

Nicolle Lathrop
Quality Manager
foodsafety@latuapasta.com

P: (Phone) +442089618024

Commercial Contact

Jessica Scudetti
Jessica.scudetti@latuapasta.com

P: (Phone) +442089618024

The information on the [Erudus System](#) has been supplied by the manufacturers of the products and, whilst the owners of the Erudus System take steps to ensure the information is regularly updated, they give no warranty and no guarantee that the information is accurate. Product information and ingredients may change, please always read product labels carefully in addition to using the information provided by Erudus.

We do not accept liability for any inaccuracies or incorrect information contained on this site.
Please visit <http://www.erudus.com/terms-and-conditions> for full terms and conditions.