

TUA207

Ravioli Peas & Shallot / Durum Wheat Pasta Frozen 3x1kg

Ravioli Peas & Shallot / Durum Wheat Pasta Frozen 3x1kg

PRODUCT DESCRIPTION

Fresh Pasta Filled with Peas & Shallot

Brand	La Tua Pasta
Manufacturer Product Code	RA0493000F
Product Type	Food
Product Category	Pasta, Rice and Noodles
Storage Type	Frozen
Erudus ID	ee410b6fc1f24d09b5da331e94873bd4
Specification Type	Legacy
Inner Component GTIN	5055430403070
Outer Case GTIN	5055430403070



INGREDIENTS

Ingredient Declaration

Pasta (50%): Durum **WHEAT** Flour, Water.

Filling (50%): Peas (66%), Shallots (11%), Breadcrumbs (**WHEAT** Flour, Salt, Yeast), Olive Oil, Water, Salt.

Further Ingredient : Dusted with Rice Flour.

ALLERGENS

Product Contains:

Celery/Celeriac	May Contain
Cereals Containing Gluten	Yes
Barley	No
Oats	No
Rye	No
Wheat (including Spelt and Khorasan)	Yes
Gluten content <20ppm	No
Crustacea	May Contain
Eggs	May Contain
Fish	May Contain
Lupin	No
Milk	May Contain
Molluscs	No

Mustard	May Contain
Nuts (Tree)	May Contain
Almond nuts	No
Brazil nuts	No
Cashew nuts	No
Hazelnuts	May Contain
Macadamia (Queensland) nuts	No
Pecan nuts	No
Pistachio nuts	May Contain
Walnuts	No
Peanuts	No
Sesame Seeds	No
Soybeans	May Contain
Sulphur Dioxide and Sulphites	No

Risk Source:

Additional Allergen Information

Produced in a factory that handles Wheat, Egg, Milk, Nut, Mustard, Crustacean, Fish, Celery and Soy.

SUPPLEMENTARY
INGREDIENT
INFORMATION

Palm Oil	No
Hydrogenated Vegetable Oil/Fat	No
GM Protein/DNA	No

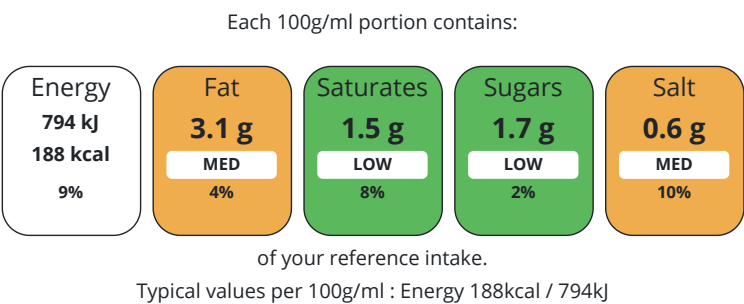
ADDITIVES

Product Contains:			
Artificial Antioxidants	No	Artificial Flavourings	No
Artificial Colours	No	Artificial Preservatives	No
Artificial Flavour Enhancers	No	Artificial Sweeteners	No

DIET SUITABILITY

Suitable for Coeliacs	No	Halal Diet	No
Kosher Diet	No	Vegetarian Diet	Suitable for
Vegan Diet	Suitable for		

NUTRITIONAL
INFORMATION



Nutrient	per 100g/ml	RI per 100g/ml	per 125g/ml serving	RI per 125g/ml serving
Energy (kJ)	794 kJ	9%	992.5	12%
Energy (kcal)	188 kcal	9%	235	12%
Fat	3.1 g	4%	3.88 g	6%
of which Saturates	1.5 g	8%	1.88 g	9%
Carbohydrate	31.5 g	12%	39.38 g	15%
of which Sugars	1.7 g	2%	2.13 g	2%
Protein	7.2 g	14%	9 g	18%
Salt	0.6 g	10%	0.75 g	13%

Serving Size	125 g
--------------	-------

SUPPLEMENTARY
NUTRITIONAL
INFORMATION

HANDLING &
STORAGE
INFORMATION

Directions For Use	Cook for 5-6 minutes in boiling water.
Storage Instructions	Keep Frozen at -18 C. To maintain quality do not defrost, cook straight from frozen.
Shelf Life from Time of Production	547 Days

ACCREDITATIONS/
CERTIFICATIONS/
ASSURANCE
SCHEMES
ORIGIN

BRCGS Certified	
Product Country of Origin	United Kingdom
Additional Origin Details	UK

PRODUCT
CHARACTERISTICS

Standards Testing

	Do you undertake trend analysis of microbiological results?		Yes	Is shelf life testing undertaken?		Yes
	Microbiological Standards					
	Organism	Description	Frequency	Target	Maximum	Sample (g or ml)
	Bacillus Cereus (cfu/g or ml)		Monthly	<100	100000	200
	Clostridium Perfringens (cfu/g or ml)		Monthly	<10	10000	200
	E. Coli (cfu/g or ml)		Monthly	<10	100	200
	Listeria Monocytogenes (cfu/g or ml)		Monthly	<0	0	200
	Staphylococcus Aureus (cfu/g or ml)		Monthly	<100	10000	200
	Salmonella (cfu/g or ml)		Monthly	<0	0	200
CONFIGURATION	Case Configuration			Inner Pack Configuration		
	Total Quantity of Inner Components in Outer Case	3 Units				
	Is the Outer Case Splittable?		Yes			
PRODUCT WEIGHTS	Inner Component					
	Variable Weight Consumer Item		No			
	Weight/Volume					
	17g					
	Outer Case					
	Outer Case Gross Weight		3.29 kg			
	Outer Case Net Weight		3 kg			
PRODUCT DIMENSIONS	Inner Component					
	Inner Component Depth		310 mm			
	Inner Component Width		290 mm			
	Inner Component Height		3 mm			
	Outer Case					
	Outer Case Depth		325 mm			
	Outer Case Width		300 mm			
	Outer Case Height		135 mm			
PALLET INFORMATION	Quantity of Cases Per Pallet Layer		12 Cases	Pallet Height		1.82 MTR
	Quantity of Layers Per Pallet		12 Layers	Pallet Gross Weight		495 kg
	Quantity of Cases Per Pallet		144 Cases			
PACKAGING	Inner Component Packaging					
	Type	Materials	Weight	Recycled Plastic %	Recyclable	Returnable Composite
	Bag	Plastic	51 g	- %		
	Outer Case Packaging					
	Type	Materials	Weight	Recycled Plastic %	Recyclable	Returnable Composite
	Case	Paper/Cardboard	234 g	- %		
OTHER INFORMATION	Identification/Health Marks					GB FB116

CONTACT
INFORMATION

Address
La Tua Pasta
Unit 4 Nucleus Park
Central Way
London
London
NW10 7XT
United Kingdom

P: (Phone) +442089618024

Complaints Contact
Nicolle Lathrop
Quality Manager
foodsafety@latuapasta.com

P: (Phone) +442089618024

Technical Contact
Nicolle Lathrop
Quality Manager
foodsafety@latuapasta.com

P: (Phone) +442089618024

Commercial Contact
Jessica Scudetti
Jessica.scudetti@latuapasta.com

P: (Phone) +442089618024

The information on the [Erudus System](#) has been supplied by the manufacturers of the products and, whilst the owners of the Erudus System take steps to ensure the information is regularly updated, they give no warranty and no guarantee that the information is accurate. Product information and ingredients may change, please always read product labels carefully in addition to using the information provided by Erudus.

We do not accept liability for any inaccuracies or incorrect information contained on this site.
Please visit <http://www.erudus.com/terms-and-conditions> for full terms and conditions.