

TUA402

# Fusilli / Egg Pasta Fresh 1Kg

Fusilli / Egg Pasta 1x1kg

## PRODUCT DESCRIPTION

Fresh Egg Pasta

Brand	La Tua Pasta
Manufacturer Product Code	PC06
Product Type	Food
Product Category	Pasta, Rice and Noodles
Storage Type	Chilled
Erudus ID	46e8d78e460a4c63b83e7ecab36c9283
Specification Type	Generic
Inner Component GTIN	5055430401816



## INGREDIENTS

**Ingredient Declaration**  
Flour 00 (**WHEAT**, Calcium, Iron, Niacin, Thiamine) , Pasteurised **EGG** (30%), Durum **WHEAT** Flour, Salt. Dusted with rice flour.

## ALLERGENS

Product Contains:

Celery/Celeriac	May Contain
Cereals Containing Gluten	Yes
Barley	No
Oats	No
Rye	No
Wheat (including Spelt and Khorasan)	Yes
Crustacea	May Contain
Eggs	Yes
Fish	May Contain
Lupin	No
Milk	May Contain
Molluscs	No

Mustard	May Contain
Nuts (Tree)	May Contain
Almond nuts	No
Brazil nuts	No
Cashew nuts	No
Hazelnuts	May Contain
Macadamia (Queensland) nuts	No
Pecan nuts	No
Pistachio nuts	May Contain
Walnuts	No
Peanuts	No
Sesame Seeds	No
Soybeans	May Contain
Sulphur Dioxide and Sulphites	No

Risk Source:

### Additional Allergen Information

Produced in a factory that handles Wheat, Egg, Milk, Nut, Mustard, Crustacean, Fish, Celery and Soy.

## SUPPLEMENTARY INGREDIENT INFORMATION

Palm Oil	No
Hydrogenated Vegetable Oil/Fat	No
GM Protein/DNA	No

ADDITIVES

Product Contains:

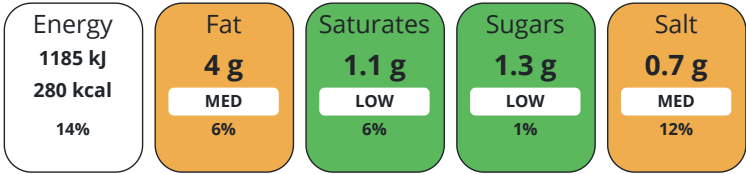
Artificial Antioxidants	No	Artificial Flavourings	No
Artificial Colours	No	Artificial Preservatives	No
Artificial Flavour Enhancers	No	Artificial Sweeteners	No

DIET SUITABILITY

Vegan Diet	No	Vegetarian Diet	Suitable for
Halal Diet	No	Kosher Diet	No

NUTRITIONAL  
INFORMATION AS  
SOLD

Each 100g/ml portion contains:



of your reference intake.

Typical values per 100g/ml : Energy 280kcal / 1185kj

Nutrient	per 100g	RI per 100g	per 125g serving	RI per 125g serving
Energy (kJ)	1185 kJ	14%	1481.25	18%
Energy (kcal)	280 kcal	14%	350	18%
Fat	4 g	6%	5 g	7%
of which Saturates	1.1 g	6%	1.38 g	7%
Carbohydrate	47.7 g	18%	59.63 g	23%
of which Sugars	1.3 g	1%	1.63 g	2%
Protein	12.6 g	25%	15.75 g	32%
Salt	0.7 g	12%	0.88 g	15%

Serving Size	125 g
--------------	-------

SUPPLEMENTARY  
NUTRITIONAL  
INFORMATION

HANDLING &  
STORAGE  
INFORMATION

Directions For Use

Cooking Instructions: Fresh: Cook for 4-5 minutes in boiling water. Frozen: Cook for 5-6 minutes in boiling water.

Storage Instructions

Keep Refrigerated at 0-5C. Once opened consume within 2 days. Suitable for freezing. Freeze on day of purchase and consume within 3 months, cook from frozen.

Shelf Life from Time of Production	5 Days
------------------------------------	--------

BRCGS Certified
-----------------

ACCREDITATIONS/  
CERTIFICATIONS/  
ASSURANCE  
SCHEMES  
ORIGIN

Product Country of Origin	United Kingdom
---------------------------	----------------

Additional Origin Details

Flour 00 - Italy - UK Pasteurised Egg - UK Durum Wheat Flour Italy-UK Salt - Turkey Rice flour (for dusting) - Italy-UK

Origin of the Primary Ingredient
----------------------------------

PRODUCT  
CHARACTERISTICS

Standards Testing		
Do you undertake trend analysis of microbiological results?	Yes	Is shelf life testing undertaken? Yes

Microbiological Standards

	<b>Organism</b>	<b>Description</b>	<b>Frequency</b>	<b>Target</b>	<b>Maximum</b>	<b>Sample (g or ml)</b>	
	Bacillus Cereus (cfu/g or ml)		Monthly	<100	100000	200	
	Clostridium Perfringens (cfu/g or ml)		Monthly	<10	10000	200	
	E. Coli (cfu/g or ml)		Monthly	<10	100	200	
	Listeria Monocytogenes (cfu/g or ml)		Monthly	<0	0	200	
	Staphylococcus Aureus (cfu/g or ml)		Monthly	<100	10000	200	
	Salmonella (cfu/g or ml)		Monthly	<0	0	200	
CONFIGURATION	Case Configuration			Inner Pack Configuration			
PRODUCT WEIGHTS	<b>Total Quantity of Inner Components in Outer Case</b>		1 Units				
	Inner Component						
	<b>Variable Weight Consumer Item</b>		No				
	<b>Inner Component Weight</b>		1 kg				
	<b>Net Drained Weight</b>		1 kg				
PRODUCT DIMENSIONS	Outer Case						
	<b>Outer Case Gross Weight</b>		0 kg				
	<b>Outer Case Net Weight</b>		0 kg				
	Inner Component						
	<b>Inner Component Depth</b>		320 mm				
	<b>Inner Component Width</b>		50 mm				
PALLET INFORMATION	<b>Inner Component Height</b>		245 mm				
	Outer Case						
	<b>Outer Case Depth</b>		335 mm				
	<b>Outer Case Width</b>		330 mm				
	<b>Outer Case Height</b>		300 mm				
PACKAGING	<b>Quantity of Cases Per Pallet Layer</b>		1 Cases		<b>Pallet Height</b>		0 MTR
	<b>Quantity of Layers Per Pallet</b>		1 Layers				
	<b>Quantity of Cases Per Pallet</b>		1 Cases				
SAFETY & WARNINGS	Inner Component Packaging						
	<b>Type</b>	<b>Materials</b>	<b>Weight</b>	<b>Recycled Plastic %</b>	<b>Recyclable</b>	<b>Returnable</b>	<b>Composite</b>
	Tray	Plastic	72 g	- %			
	Outer Case Packaging						
	<b>Type</b>	<b>Materials</b>	<b>Weight</b>	<b>Recycled Plastic %</b>	<b>Recyclable</b>	<b>Returnable</b>	<b>Composite</b>
	Case	Paper/Cardboard	434 g	- %			
OTHER INFORMATION	Identification/Health Marks				GB FB116		

CONTACT  
INFORMATION

Address  
La Tua Pasta  
Unit 4 Nucleus Park  
Central Way  
London  
London  
NW10 7XT  
United Kingdom

P: (Phone) +442089618024

Complaints Contact  
Nicolle Lathrop  
Quality Manager  
foodsafety@latuapasta.com

P: (Phone) +442089618024

Technical Contact  
Nicolle Lathrop  
Quality Manager  
foodsafety@latuapasta.com

P: (Phone) +442089618024

Commercial Contact  
Jessica Scudetti  
Jessica.scudetti@latuapasta.com

P: (Phone) +442089618024

The information on the [Erudus System](#) has been supplied by the manufacturers of the products and, whilst the owners of the Erudus System take steps to ensure the information is regularly updated, they give no warranty and no guarantee that the information is accurate. Product information and ingredients may change, please always read product labels carefully in addition to using the information provided by Erudus.

We do not accept liability for any inaccuracies or incorrect information contained on this site.  
Please visit <http://www.erudus.com/terms-and-conditions> for full terms and conditions.