

TUA406

# Paccheri / Egg Pasta Fresh 500g

Paccheri / Egg Pasta Fresh 500g

## PRODUCT DESCRIPTION

Fresh Egg Pasta

Brand	La Tua Pasta
Manufacturer Product	PC14
Code	
Product Type	Food
Product Category	Pasta, Rice and Noodles
Storage Type	Chilled
Erudus ID	a4da08aeebde4bb19f8f3749533dcd0b
Specification Type	Legacy

Inner Component GTIN5055430400307



## INGREDIENTS

### Ingredient Declaration

Flour 00 (**WHEAT**), Pasteurised **EGG** (30%), Durum **WHEAT** Flour, Salt.  
Dusted with rice flour

## ALLERGENS

Product Contains:

Celery/Celeriac	May Contain
Cereals Containing Gluten	Yes
Barley	No
Oats	No
Rye	No
Wheat (including Spelt and Khorasan)	Yes
Gluten content <20ppm	No
Crustacea	May Contain
Eggs	Yes
Fish	May Contain
Lupin	No
Milk	May Contain
Molluscs	No

Mustard	May Contain
Nuts (Tree)	May Contain
Almond nuts	No
Brazil nuts	No
Cashew nuts	No
Hazelnuts	May Contain
Macadamia (Queensland) nuts	No
Pecan nuts	No
Pistachio nuts	May Contain
Walnuts	No
Peanuts	No
Sesame Seeds	No
Soybeans	May Contain
Sulphur Dioxide and Sulphites	No

Risk Source:

### Additional Allergen Information

Produced in a factory that handles Wheat, Egg, Milk, Nut, Mustard, Crustacean, Fish, Celery and Soy.

## SUPPLEMENTARY INGREDIENT INFORMATION

Palm Oil	No
Hydrogenated Vegetable Oil/Fat	No
GM Protein/DNA	No

ADDITIVES

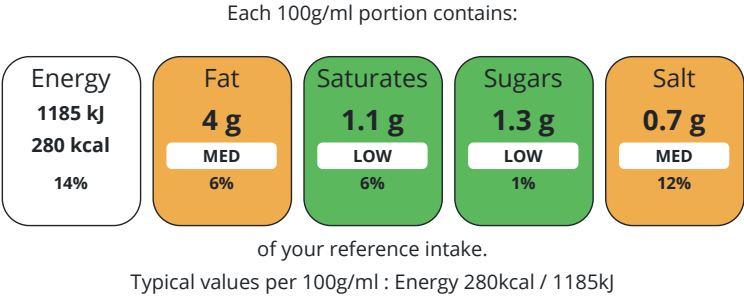
Product Contains:

Artificial Antioxidants	No	Artificial Flavourings	No
Artificial Colours	No	Artificial Preservatives	No
Artificial Flavour Enhancers	No	Artificial Sweeteners	No

DIET SUITABILITY

Suitable for Coeliacs	No	Halal Diet	No
Kosher Diet	No	Vegetarian Diet	Suitable for
Vegan Diet	No		

NUTRITIONAL INFORMATION



Nutrient	per 100g/ml	RI per 100g/ml	per 125g/ml serving	RI per 125g/ml serving
Energy (kJ)	1185 kJ	14%	1481.25	18%
Energy (kcal)	280 kcal	14%	350	18%
Fat	4 g	6%	5 g	7%
of which Saturates	1.1 g	6%	1.38 g	7%
Carbohydrate	47.7 g	18%	59.63 g	23%
of which Sugars	1.3 g	1%	1.63 g	2%
Protein	12.6 g	25%	15.75 g	32%
Salt	0.7 g	12%	0.88 g	15%

Serving Size 125 g

SUPPLEMENTARY NUTRITIONAL INFORMATION

HANDLING & STORAGE INFORMATION

Directions For Use	Cooking Instructions: Fresh: Cook for 4-5 minutes in boiling water. Frozen: Cook for 5-6 minutes in boiling water.
Storage Instructions	Keep Refrigerated at 0-5C. Once opened consume within 2 days. Suitable for freezing. Freeze on day of purchase and consume within 3 months, cook from frozen.
Shelf Life from Time of Production	5 Days

ACCREDITATIONS/ CERTIFICATIONS/ ASSURANCE SCHEMES ORIGIN

BRCGS Certified	
Product Country of Origin	United Kingdom
Additional Origin Details	Flour 00 Italy-UK Pasteurised Egg Italy-UK Durum Wheat Flour Italy-UK Salt Turkey Rice flour (for dusting) Italy-UK

PRODUCT CHARACTERISTICS

Standards Testing			
Do you undertake trend analysis of microbiological results?	Yes	Is shelf life testing undertaken?	Yes
Microbiological Standards			

	<b>Organism</b>	<b>Description</b>	<b>Frequency</b>	<b>Target</b>	<b>Maximum</b>	<b>Sample (g or ml)</b>	
	Bacillus Cereus (cfu/g or ml)		Monthly	<100	100000	200	
	Clostridium Perfringens (cfu/g or ml)		Monthly	<10	10000	200	
	E. Coli (cfu/g or ml)		Monthly	<10	100	200	
	Listeria Monocytogenes (cfu/g or ml)		Monthly	<0	0	200	
	Staphylococcus Aureus (cfu/g or ml)		Monthly	<100	10000	200	
	Salmonella (cfu/g or ml)		Monthly	<0	0	200	
CONFIGURATION	Case Configuration			Inner Pack Configuration			
	<b>Total Quantity of Inner Components in</b>		4 Units				
	<b>Outer Case</b>						
PRODUCT WEIGHTS	Inner Component						
	<b>Variable Weight Consumer Item</b>		No				
	<b>Weight/Volume</b>						
	77						
	Outer Case						
	<b>Outer Case Gross Weight</b>		0 kg				
	<b>Outer Case Net Weight</b>		0 kg				
PRODUCT DIMENSIONS	Inner Component						
	<b>Inner Component Depth</b>		320 mm				
	<b>Inner Component Width</b>		245 mm				
	<b>Inner Component Height</b>		50 mm				
	Outer Case						
	<b>Outer Case Depth</b>		0 mm				
	<b>Outer Case Width</b>		0 mm				
	<b>Outer Case Height</b>		0 mm				
PALLET INFORMATION	<b>Quantity of Cases Per Pallet Layer</b>		1 Cases	<b>Pallet Height</b>		1 MTR	
	<b>Quantity of Layers Per Pallet</b>		1 Layers				
	<b>Quantity of Cases Per Pallet</b>		1 Cases				
PACKAGING	Inner Component Packaging						
	<b>Type</b>	<b>Materials</b>	<b>Weight</b>	<b>Recycled Plastic %</b>	<b>Recyclable</b>	<b>Returnable</b>	<b>Composite</b>
	Tray	Plastic	77 g	- %			
OTHER INFORMATION							

CONTACT  
INFORMATION

Address  
La Tua Pasta  
Unit 4 Nucleus Park  
Central Way  
London  
London  
NW10 7XT  
United Kingdom

P: (Phone) +442089618024

Complaints Contact  
Nicolle Lathrop  
Quality Manager  
foodsafety@latuapasta.com

P: (Phone) +442089618024

Technical Contact  
Nicolle Lathrop  
Quality Manager  
foodsafety@latuapasta.com

P: (Phone) +442089618024

Commercial Contact  
Jessica Scudetti  
Jessica.scudetti@latuapasta.com

P: (Phone) +442089618024

The information on the [Erudus System](#) has been supplied by the manufacturers of the products and, whilst the owners of the Erudus System take steps to ensure the information is regularly updated, they give no warranty and no guarantee that the information is accurate. Product information and ingredients may change, please always read product labels carefully in addition to using the information provided by Erudus.

We do not accept liability for any inaccuracies or incorrect information contained on this site.  
Please visit <http://www.erudus.com/terms-and-conditions> for full terms and conditions.