

TUA409

Rustichelle / Egg Pasta Fresh 1Kg

Rustichelle / Egg Pasta 1x1kg

PRODUCT DESCRIPTION

Fresh Egg Pasta

Brand	La Tua Pasta
Manufacturer Product Code	PC03
Product Type	Food
Product Category	Pasta, Rice and Noodles
Storage Type	Chilled
Erudus ID	40d3ae1bfd0048eca1e1333a383aa2c9
Specification Type	Generic
Inner Component GTIN	5055430407238
Inner Pack GTIN	5055430407238



INGREDIENTS

Ingredient Declaration
Flour 00 (**WHEAT**, Calcium, Iron, Niacin, Thiamine), Pasteurised **EGG** (30%), Durum **WHEAT** Flour, Salt. Dusted with rice flour.

ALLERGENS

Product Contains:

Celery/Celeriac	May Contain
Cereals Containing Gluten	Yes
Barley	No
Oats	No
Rye	No
Wheat (including Spelt and Khorasan)	Yes
Crustacea	May Contain
Eggs	Yes
Fish	May Contain
Lupin	No
Milk	May Contain
Molluscs	No

Mustard	May Contain
Nuts (Tree)	May Contain
Almond nuts	No
Brazil nuts	No
Cashew nuts	No
Hazelnuts	May Contain
Macadamia (Queensland) nuts	No
Pecan nuts	No
Pistachio nuts	May Contain
Walnuts	No
Peanuts	No
Sesame Seeds	No
Soybeans	May Contain
Sulphur Dioxide and Sulphites	No

Risk Source:

Allergen Statement On Pack

Produced in a factory that handles Wheat, Egg, Milk, Nut, Mustard, Crustacean, Fish, Celery and Soy.

SUPPLEMENTARY
INGREDIENT
INFORMATION

Palm Oil	No
Hydrogenated Vegetable Oil/Fat	No
GM Protein/DNA	No

Alcoholic Strength %Vol (ABV)	0 % Vol
-------------------------------	---------

ADDITIVES

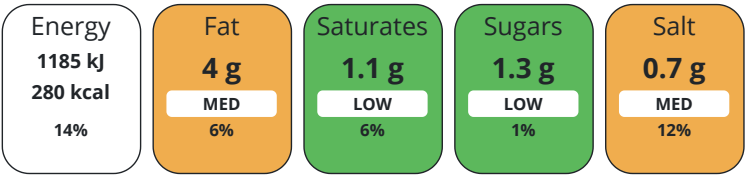
Product Contains:			
Artificial Antioxidants	No	Artificial Flavourings	No
Artificial Colours	No	Artificial Preservatives	No
Artificial Flavour Enhancers	No	Artificial Sweeteners	No

DIET SUITABILITY

Vegan Diet	No	Vegetarian Diet	Suitable for
Halal Diet	Suitable for	Kosher Diet	No

NUTRITIONAL
INFORMATION AS
SOLD

Each 100g/ml portion contains:



of your reference intake.

Typical values per 100g/ml : Energy 280kcal / 1185kJ

Nutrient	per 100g	RI per 100g	per 125g serving	RI per 125g serving
Energy (kJ)	1185 kJ	14%	1481.25	18%
Energy (kcal)	280 kcal	14%	350	18%
Fat	4 g	6%	5 g	7%
of which Saturates	1.1 g	6%	1.38 g	7%
Carbohydrate	47.7 g	18%	59.63 g	23%
of which Sugars	1.3 g	1%	1.63 g	2%
Protein	12.6 g	25%	15.75 g	32%
Salt	0.7 g	12%	0.88 g	15%

Serving Size	125 g
--------------	-------

Source of Nutritional Information	Calculation from known/accepted datasets
-----------------------------------	--

SUPPLEMENTARY
NUTRITIONAL
INFORMATION

HANDLING &
STORAGE
INFORMATION

Directions For Use	Fresh: Cook for 4-5 minutes in boiling water. Frozen: Cook for 5-6 minutes in boiling water.
Storage Instructions	Keep Refrigerated at 0-5C. Once opened consume within 2 days. Suitable for freezing. Freeze on day of purchase and consume within 3 months, cook from frozen.
Shelf Life from Time of Production	5 Days
BRCGS Certified	

ACCREDITATIONS/
CERTIFICATIONS/
ASSURANCE
SCHEMES
ORIGIN

Product Country of Origin	United Kingdom
Additional Origin Details	Flour 00 - Italy Pasteurised Egg - UK Durum Wheat Flour - Italy Salt - Turkey Rice Flour - UK
Origin of the Primary Ingredient	

PRODUCT CHARACTERISTICS

Standards Testing						
Do you undertake trend analysis of microbiological results?		Yes	Is shelf life testing undertaken?			Yes
Microbiological Standards						
Organism	Description	Frequency	Target	Maximum	Sample (g or ml)	
Bacillus Cereus (cfu/g or ml)		Monthly	<100	100000	200	
Clostridium Perfringens (cfu/g or ml)		Monthly	<10	10000	200	
E. Coli (cfu/g or ml)		Monthly	<10	100	200	
Listeria Monocytogenes (cfu/g or ml)		Monthly	<0	0	200	
Staphylococcus Aureus (cfu/g or ml)		Monthly	<100	10000	200	
Salmonella (cfu/g or ml)		Monthly	<0	0	200	

CONFIGURATION

Case Configuration		Inner Pack Configuration			
Total Quantity of Inner Components in Outer Case	1 Units	Is Inner Pack Splittable?			No

PRODUCT WEIGHTS

Inner Component		Inner Pack			
Variable Weight Consumer Item	No	Inner Pack Gross Weight			1.1 kg
Inner Component Weight	1 kg	Inner Pack Net Weight			1 kg
e mark					
Outer Case					
Outer Case Gross Weight	1.1 kg				
Outer Case Net Weight	1 kg				

PRODUCT DIMENSIONS

Inner Component	
Inner Component Depth	320 mm
Inner Component Width	245 mm
Inner Component Height	50 mm
Outer Case	
Outer Case Depth	335 mm
Outer Case Width	330 mm
Outer Case Height	300 mm

PALLET INFORMATION

Non Palletised	Yes
----------------	-----

MARKETING INFORMATION

Marketing Description
Fresh Egg Pasta

SAFETY & WARNINGS

OTHER INFORMATION

CONTACT
INFORMATION

Address
La Tua Pasta
Unit 4 Nucleus Park
Central Way
London
London
NW10 7XT
United Kingdom

P: (Phone) +442089618024

Complaints Contact
Nicolle Lathrop
Quality Manager
foodsafety@latuapasta.com

P: (Phone) +442089618024

Technical Contact
Nicolle Lathrop
Quality Manager
foodsafety@latuapasta.com

P: (Phone) +442089618024

Commercial Contact
Jessica Scudetti
Jessica.scudetti@latuapasta.com

P: (Phone) +442089618024

The information on the [Erudus System](#) has been supplied by the manufacturers of the products and, whilst the owners of the Erudus System take steps to ensure the information is regularly updated, they give no warranty and no guarantee that the information is accurate. Product information and ingredients may change, please always read product labels carefully in addition to using the information provided by Erudus.

We do not accept liability for any inaccuracies or incorrect information contained on this site.
Please visit <http://www.erudus.com/terms-and-conditions> for full terms and conditions.