

TUA505

Tortelloni Cacio e Pepe / Egg Pasta Fresh 1Kg

Tortelloni Cacio E Pepe 5x

PRODUCT DESCRIPTION

Fresh Egg Pasta Filled with Pecorino Cheese & Black Pepper

Brand	La Tua Pasta
Manufacturer Product	TL0211000
Code	
Product Type	Food
Product Category	Pasta, Rice and Noodles
Storage Type	Chilled
Erudus ID	8339f2d309fd489b9dc72d687198cc60
Specification Type	Legacy

Inner Component GTIN5055430411952



INGREDIENTS

Ingredient Declaration
Pasta (56%): Flour 00 (**WHEAT**), Pasteurised **EGG** (30%), Durum **WHEAT** Flour, Salt, Water.
Filling (44%): Ricotta Cheese (**MILK**), Pecorino Romano Cheese (27 %) (Sheep's **MILK**, Lamb's Rennet Paste, Salt), **MILK**, Flour 00 (**WHEAT**), Butter (**MILK**), Salt, Nutmeg, Black Pepper (1%).

Dusted with rice flour

ALLERGENS

Product Contains:	
Celery/Celeriac	May Contain
Cereals Containing Gluten	Yes
Barley	No
Oats	No
Rye	No
Wheat (including Spelt and Khorasan)	Yes
Gluten content <20ppm	No
Crustacea	May Contain
Eggs	Yes
Fish	May Contain
Lupin	No
Milk	Yes
Molluscs	No
Mustard	May Contain
Nuts (Tree)	May Contain
Almond nuts	No
Brazil nuts	No
Cashew nuts	No
Hazelnuts	May Contain
Macadamia (Queensland) nuts	No
Pecan nuts	No
Pistachio nuts	May Contain
Walnuts	No
Peanuts	No
Sesame Seeds	No
Soybeans	May Contain
Sulphur Dioxide and Sulphites	No

Risk Source:

Additional Allergen Information

Produced in a factory that handles Wheat, Egg, Milk, Nut, Mustard, Crustacean, Fish, Celery and Soy.

SUPPLEMENTARY
INGREDIENT
INFORMATION

Palm Oil	No
Hydrogenated Vegetable Oil/Fat	No
GM Protein/DNA	No

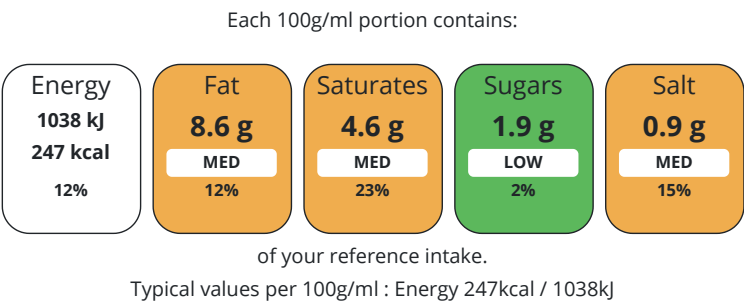
ADDITIVES

Product Contains:			
Artificial Antioxidants	No	Artificial Flavourings	No
Artificial Colours	No	Artificial Preservatives	No
Artificial Flavour Enhancers	No	Artificial Sweeteners	No

DIET SUITABILITY

Suitable for Coeliacs	No	Halal Diet	No
Kosher Diet	No	Vegetarian Diet	No
Vegan Diet	No		

NUTRITIONAL
INFORMATION



Nutrient	per 100g/ml	RI per 100g/ml	per 125g/ml serving	RI per 125g/ml serving
Energy (kj)	1038 kj	12%	1297.5	15%
Energy (kcal)	247 kcal	12%	308.75	15%
Fat	8.6 g	12%	10.75 g	15%
of which Saturates	4.6 g	23%	5.75 g	29%
Carbohydrate	29.5 g	11%	36.88 g	14%
of which Sugars	1.9 g	2%	2.38 g	3%
Protein	12.3 g	25%	15.38 g	31%
Salt	0.9 g	15%	1.13 g	19%

Serving Size	125 g
--------------	-------

SUPPLEMENTARY
NUTRITIONAL
INFORMATION

HANDLING &
STORAGE
INFORMATION

Directions For Use	Cooking Instructions: Fresh: Cook for 4-5 minutes in boiling water. Frozen: Cook for 5-6 minutes in boiling water.
Storage Instructions	Keep refrigerated below 5C. Suitable for Freezing. Freeze on day of purchase and consume within 3 months, cook from frozen.
Shelf Life from Time of Production	5 Days
BRCGS Certified	

ACCREDITATIONS/
CERTIFICATIONS/
ASSURANCE
SCHEMES
ORIGIN

Product Country of Origin	United Kingdom
Additional Origin Details	Flour 00 Italy-UK Pasteurised Egg Italy-UK Durum Wheat Flour Italy-UK Salt Turkey Water UK Rice flour (for dusting) Italy-UK Ricotta Cheese Italy-UK Pecorino Romano Cheese Italy Milk UK Flour 00 Italy-UK Butter UK Salt Turkey Nutmeg Indonesia Black pepper Vietnam

PRODUCT CHARACTERISTICS

Standards Testing					
Do you undertake trend analysis of microbiological results?		No	Is shelf life testing undertaken?		No
Microbiological Standards					
Organism	Description	Frequency	Target	Maximum	Sample (g or ml)
Bacillus Cereus (cfu/g or ml)		Monthly	<100	100000	-
Clostridium Perfringens (cfu/g or ml)		Monthly	<10	10000	-
E. Coli (cfu/g or ml)		Monthly	<10	100	-
Listeria Monocytogenes (cfu/g or ml)		Monthly	<0	0	-
Staphylococcus Aureus (cfu/g or ml)		Monthly	<100	10000	-
Salmonella (cfu/g or ml)		Monthly	<0	0	-

CONFIGURATION

Case Configuration		Inner Pack Configuration			
Total Quantity of Inner Components in Outer Case	5 Units				

PRODUCT WEIGHTS

Inner Component	
Variable Weight Consumer Item	No
Net Drained Weight	1 kg
Weight/Volume	
72g	
Outer Case	
Outer Case Gross Weight	0.43 kg
Outer Case Net Weight	1 kg

PRODUCT DIMENSIONS

Inner Component	
Inner Component Depth	320 mm
Inner Component Width	245 mm
Inner Component Height	50 mm
Outer Case	
Outer Case Depth	335 mm
Outer Case Width	330 mm
Outer Case Height	300 mm

PALLET INFORMATION

Quantity of Cases Per Pallet Layer	8 Cases	Pallet Height	0 MTR
Quantity of Layers Per Pallet	8 Layers		
Quantity of Cases Per Pallet	64 Cases		

PACKAGING

Inner Component Packaging						
Type	Materials	Weight	Recycled Plastic %	Recyclable	Returnable	Composite
Tray	Plastic	72 g	- %			
Outer Case Packaging						
Type	Materials	Weight	Recycled Plastic %	Recyclable	Returnable	Composite
Case	Paper/Cardboard	434 g	- %			

OTHER INFORMATION

Identification/Health Marks	GB FB116
-----------------------------	----------

CONTACT
INFORMATION

Address
La Tua Pasta
Unit 4 Nucleus Park
Central Way
London
London
NW10 7XT
United Kingdom

P: (Phone) +442089618024

Complaints Contact
Nicolle Lathrop
Quality Manager
foodsafety@latuapasta.com

P: (Phone) +442089618024

Technical Contact
Nicolle Lathrop
Quality Manager
foodsafety@latuapasta.com

P: (Phone) +442089618024

Commercial Contact
Jessica Scudetti
Jessica.scudetti@latuapasta.com

P: (Phone) +442089618024

The information on the [Erudus System](#) has been supplied by the manufacturers of the products and, whilst the owners of the Erudus System take steps to ensure the information is regularly updated, they give no warranty and no guarantee that the information is accurate. Product information and ingredients may change, please always read product labels carefully in addition to using the information provided by Erudus.

We do not accept liability for any inaccuracies or incorrect information contained on this site.
Please visit <http://www.erudus.com/terms-and-conditions> for full terms and conditions.