

TUA506

Tortelloni Peas & Shallot / Egg Pasta Fresh 1Kg

Tortelloni Peas & Shallot / Egg Pasta 2x

PRODUCT DESCRIPTION
Fresh Egg Pasta Filled with Peas & Shallot

Brand	La Tua Pasta
Manufacturer Product	TL0491000
Code	
Product Type	Food
Product Category	Pasta, Rice and Noodles
Storage Type	Chilled
Erudus ID	2a759d49b4da4ac2908ca527871cd89c
Specification Type	Legacy

Inner Component GTIN5055430400864



INGREDIENTS

Ingredient Declaration
Pasta (56%): Flour 00 (**WHEAT**), Pasteurised **EGG** (30%), Durum **WHEAT** Flour, Salt, Water.
Filling (44%): Peas (66%), Shallots (11%), Breadcrumbs (**WHEAT** Flour, Salt, Yeast), Olive Oil, Water, Salt.
Dusted with rice flour

ALLERGENS

<i>Product Contains:</i>			
Celery/Celeriac	May Contain	Mustard	May Contain
Cereals Containing Gluten	Yes	Nuts (Tree)	May Contain
Barley	No	Almond nuts	No
Oats	No	Brazil nuts	No
Rye	No	Cashew nuts	No
Wheat (including Spelt and Khorasan)	Yes	Hazelnuts	May Contain
Gluten content <20ppm	No	Macadamia (Queensland) nuts	No
Crustacea	May Contain	Pecan nuts	No
Eggs	Yes	Pistachio nuts	May Contain
Fish	May Contain	Walnuts	No
Lupin	No	Peanuts	No
Milk	May Contain	Sesame Seeds	No
Molluscs	No	Soybeans	May Contain
		Sulphur Dioxide and Sulphites	No

Risk Source:

Additional Allergen Information
Produced in a factory that handles Wheat, Egg, Milk, Nut, Mustard, Crustacean, Fish, Celery and Soy.

SUPPLEMENTARY INGREDIENT INFORMATION

Palm Oil	No
Hydrogenated Vegetable Oil/Fat	No
GM Protein/DNA	No

ADDITIVES

Product Contains:

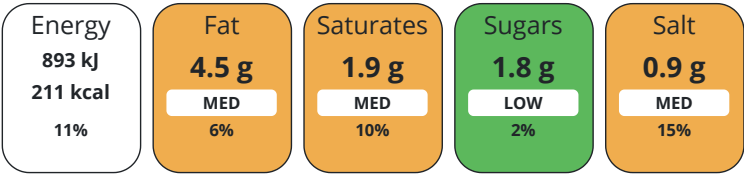
Artificial Antioxidants	No	Artificial Flavourings	No
Artificial Colours	No	Artificial Preservatives	No
Artificial Flavour Enhancers	No	Artificial Sweeteners	No

DIET SUITABILITY

Suitable for Coeliacs	No	Halal Diet	No
Kosher Diet	No	Vegetarian Diet	Suitable for
Vegan Diet	No		

NUTRITIONAL INFORMATION

Each 100g/ml portion contains:



of your reference intake.

Typical values per 100g/ml : Energy 211kcal / 893kj

Nutrient	per 100g/ml	RI per 100g/ml	per 125g/ml serving	RI per 125g/ml serving
Energy (kJ)	893 kJ	11%	1116.25	13%
Energy (kcal)	211 kcal	11%	263.75	13%
Fat	4.5 g	6%	5.63 g	8%
of which Saturates	1.9 g	10%	2.38 g	12%
Carbohydrate	32.2 g	12%	40.25 g	15%
of which Sugars	1.8 g	2%	2.25 g	3%
Protein	9.3 g	19%	11.63 g	23%
Salt	0.9 g	15%	1.13 g	19%

Serving Size

125 g

SUPPLEMENTARY NUTRITIONAL INFORMATION

HANDLING & STORAGE INFORMATION

Directions For Use	Cooking Instructions: Fresh: Cook for 4-5 minutes in boiling water. Frozen: Cook for 5-6 minutes in boiling water.
Storage Instructions	Keep Refrigerated at 0-5C. Once opened consume within 2 days. Suitable for freezing. Freeze at below -15.0C on day of purchase and consume within 3 months, cook from frozen.
Shelf Life from Time of Production	5 Days

ACCREDITATIONS/ CERTIFICATIONS/ ASSURANCE SCHEMES ORIGIN

BRCGS Certified	
Product Country of Origin	United Kingdom
Additional Origin Details	Flour 00 Italy-UK Pasteurised Egg Italy-UK Durum Wheat Flour Italy-UK Salt Turkey Water UK Rice flour (for dusting) Italy-UK Peas UK Shallots UK Breadcrumbs Italy Olive Oil Italy Water UK Salt Turkey

PRODUCT CHARACTERISTICS

Standards Testing				
Do you undertake trend analysis of microbiological results?		Yes	Is shelf life testing undertaken?	Yes
<hr/>				
Microbiological Standards				

	Organism	Description	Frequency	Target	Maximum	Sample (g or ml)
	Bacillus Cereus (cfu/g or ml)		Monthly	<100	100000	200
	Clostridium Perfringens (cfu/g or ml)		Monthly	<10	10000	200
	E. Coli (cfu/g or ml)		Monthly	<10	100	200
	Listeria Monocytogenes (cfu/g or ml)		Monthly	<0	0	200
	Staphylococcus Aureus (cfu/g or ml)		Monthly	<100	10000	200
	Salmonella (cfu/g or ml)		Monthly	<0	0	200
CONFIGURATION	Case Configuration			Inner Pack Configuration		
	Total Quantity of Inner Components in Outer Case		2 Units			
PRODUCT WEIGHTS	Inner Component					
	Variable Weight Consumer Item		No			
	Weight/Volume					
	76					
PRODUCT DIMENSIONS	Outer Case					
	Outer Case Gross Weight		0 kg			
	Outer Case Net Weight		1 kg			
	Inner Component					
	Inner Component Depth		320 mm			
	Inner Component Width		245 mm			
	Inner Component Height		50 mm			
PALLET INFORMATION	Outer Case					
	Outer Case Depth		0 mm			
	Outer Case Width		0 mm			
	Outer Case Height		0 mm			
	Quantity of Cases Per Pallet Layer		2 Cases	Pallet Height	1 MTR	
	Quantity of Layers Per Pallet		1 Layers			
	Quantity of Cases Per Pallet		1 Cases			
PACKAGING	Inner Component Packaging					
	Type	Materials	Weight	Recycled Plastic %	Recyclable	Returnable Composite
	Tray	Plastic	76 g	- %		
OTHER INFORMATION						

CONTACT
INFORMATION

Address
La Tua Pasta
Unit 4 Nucleus Park
Central Way
London
London
NW10 7XT
United Kingdom

P: (Phone) +442089618024

Complaints Contact
Nicolle Lathrop
Quality Manager
foodsafety@latuapasta.com

P: (Phone) +442089618024

Technical Contact
Nicolle Lathrop
Quality Manager
foodsafety@latuapasta.com

P: (Phone) +442089618024

Commercial Contact
Jessica Scudetti
Jessica.scudetti@latuapasta.com

P: (Phone) +442089618024

The information on the [Erudus System](#) has been supplied by the manufacturers of the products and, whilst the owners of the Erudus System take steps to ensure the information is regularly updated, they give no warranty and no guarantee that the information is accurate. Product information and ingredients may change, please always read product labels carefully in addition to using the information provided by Erudus.

We do not accept liability for any inaccuracies or incorrect information contained on this site.
Please visit <http://www.erudus.com/terms-and-conditions> for full terms and conditions.