

UPF100

Violife Greek (Feta)

Violife Greek (Feta) 200g

PRODUCT DESCRIPTION

Food preparation with coconut oil / in grated form, suitable for Vegans. 200g (drained). Creamy taste, pale yellow in colour with a firm texture.



Brand	Longman Cheese Sales Ltd
Manufacturer Product Code	D1700 PS 1714 Vegan Greek (Feta) 200g
Product Type	Food
Product Category	Vegan Cheese and Dairy Substitutes
Storage Type	Chilled
Erudus ID	ff3cfb56b1494331a089c4ee21efa939
Specification Type	Alternatives (Vegetarian and Vegan)



INGREDIENTS

Ingredient Declaration
Water,
Coconut Oil (29%),
Starch,
Sea Salt,
Acidity Regulator: Glucono Delta Lactone,
Flavourings,
Olive Extract,
Vitamin B12.

ALLERGENS

<i>Product Contains:</i>	
Celery/Celeriac	No
Cereals Containing Gluten	No
Barley	No
Oats	No
Rye	No
Wheat (including Spelt and Khorasan)	No
Crustacea	No
Eggs	No
Fish	No
Lupin	No
Milk	No
Molluscs	No
Mustard	No
Nuts (Tree)	No
Almond nuts	No
Brazil nuts	No
Cashew nuts	No
Hazelnuts	No
Macadamia (Queensland) nuts	No
Pecan nuts	No
Pistachio nuts	No
Walnuts	No
Peanuts	No
Sesame Seeds	No
Soybeans	No
Sulphur Dioxide and Sulphites	No

FREE FROM CLAIMS

Free From Barley	Yes	Free From Mustard	Yes
Free From Celery/Celeriac	Yes	Free From Nuts	Yes
Free From Crustacea	Yes	Free From Oats	Yes
Free From Eggs	Yes	Free From Peanuts	Yes
Free From Fish	Yes	Free From Rye	Yes
Free From Lactose	Yes	Free From Sesame	Yes
Free From Lupin	Yes	Free From Soybeans	Yes
Free From Milk	Yes	Free From Sulphur Dioxide	Yes
Free From Molluscs	Yes	Free From Wheat	Yes

SUPPLEMENTARY INGREDIENT INFORMATION ADDITIVES

GM Protein/DNA	No
----------------	----

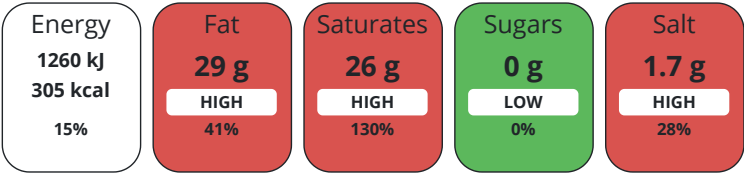
Product Contains:

DIET SUITABILITY

Vegan Diet	Suitable for	Vegetarian Diet	Suitable for
------------	--------------	-----------------	--------------

NUTRITIONAL INFORMATION AS SOLD

Each 100g/ml portion contains:



of your reference intake.

Typical values per 100g/ml : Energy 305kcal / 1260kJ

Nutrient	per 100g	RI per 100g
Energy (kJ)	1260 kJ	15%
Energy (kcal)	305 kcal	15%
Fat	29 g	41%
of which Saturates	26 g	130%
Carbohydrate	11 g	4%
of which Sugars	0 g	
Fibre	0 g	
Protein	0 g	
Salt	1.7 g	28%

VITAMINS AND MINERALS AS SOLD

Nutrient	per 100g	RI per 100g
Vitamin B12	2.5 µg	100%

SUPPLEMENTARY NUTRITIONAL INFORMATION

HANDLING &
STORAGE
INFORMATION

Directions For Use

Product is consumed as it is without the need of heating or any other kind of processing or preparation. All consumer groups can consume the product. Shelf Life: 6 months (after packaging date) when it is stored unopened at temperature 2–8°C.

Storage Instructions

Product is stored & transported (with suitable food transport means) at 2–8°C.

Storage Instructions After Opening

Shelf Life Once Open: Consume within 7 days, store at 2–8°C.

ORIGIN

Shelf Life from Time of Production180 Days

Product Country of OriginGreece

Origin of the Primary IngredientGreece

PRODUCT
CHARACTERISTICS

Standards Testing

Do you undertake trend analysis of microbiological results?Yes

Microbiological Standards

Organism	Description	Frequency	Target	Maximum	Sample (g or ml)
Salmonella (cfu/g or ml)		Monthly	=0	0	25
E. Coli (cfu/g or ml)		Monthly	<10	10	1
Yeast (cfu/g or ml)	Yeast & Mould	Monthly	<10	10	1
Staphylococcus Aureus (cfu/g or ml)	Staph aureus coag +	Monthly	<100	100	1
Coliforms (cfu/g or ml)		Monthly	<10	10	1
Total Viable Count (TVC) (cfu/g or ml)	TVC (at 37°C)	Monthly	<10000	10000	1
Listeria Monocytogenes (cfu/g or ml)		Monthly	=0	0	25

CONFIGURATION

Case Configuration

Inner Pack Configuration

Variable Inner Components in Outer CaseYes

PRODUCT
WEIGHTS

Inner Component

Variable Weight Consumer ItemYes

Net Drained Weight200 g

Outer Case

Outer Case Gross Weight0 kg

Outer Case Net Weight0 kg

PRODUCT
DIMENSIONS

Inner Component

Inner Component Depth0 mm

Inner Component Width0 mm

Inner Component Height0 mm

Outer Case

Outer Case Depth0 mm

Outer Case Width0 mm

Outer Case Height0 mm

PALLET
INFORMATION

Non PalletisedYes

SAFETY &
WARNINGS

OTHER
INFORMATION
CONTACT
INFORMATION

Address

Longman Cheese Sales Ltd
The Offices, North Leaze Farm
North Cadbury
Yeovil
Somerset
BA22 7BD
England

P: (Phone) 01963 441146

Complaints Contact

Jen Howson
QA & Technical Lead
jenhowson@longmancheese.co.uk

P: (Phone) 01963441146

Technical Contact

Jen Howson
QA & Technical Lead
jenhowson@longmancheese.co.uk

P: (Phone) 01963441146

Commercial Contact

Chris Slocombe
Managing Director
chrisslocombe@longmancheese.co.uk

P: (Phone) 01963441146

The information on the [Erudus System](#) has been supplied by the manufacturers of the products and, whilst the owners of the Erudus System take steps to ensure the information is regularly updated, they give no warranty and no guarantee that the information is accurate. Product information and ingredients may change, please always read product labels carefully in addition to using the information provided by Erudus.

We do not accept liability for any inaccuracies or incorrect information contained on this site.
Please visit <http://www.erudus.com/terms-and-conditions> for full terms and conditions.