

Changed Apr 27, 2025 07:22
Reviewed Apr 27, 2025 07:22

Erudus ID ca0a96cbdb954feb8d1888343938c306

Version 1.0

Status Published

UPF110

Violife New Creamy Original

Violife New Creamy Original

PRODUCT DESCRIPTION

Food preparation with coconut oil / suitable for Vegans in cups 150 & 200g & buckets 3 & 5.7kg
(Preservative Free)



Brand	Longman Cheese Sales Ltd
Manufacturer Product Code	D1700 PS 1706 Violife New Creamy Original
Product Type	Food
Product Category	Vegan Cheese and Dairy Substitutes
Storage Type	Chilled
Erudus ID	ca0a96cbdb954feb8d1888343938c306
Specification Type	Alternatives (Vegetarian and Vegan)



BARLEY
FREE



CELERY
FREE



CRUSTACEA
FREE



EGG
FREE



FISH
FREE



LACTOSE
FREE



LUPIN
FREE



MUSTARD
FREE



MILK
FREE



MOLLUSC
FREE



NUT
FREE



OAT
FREE



PEANUT
FREE



RYE
FREE



SESAME
FREE



SOYA
FREE



SULPHITE
FREE



WHEAT
FREE



INGREDIENTS

Ingredient Declaration

Water,
Coconut Oil (24%),
Starch,
Sunflower Kernel Grounded,
Sea Salt,
Thickener: Cellulose,
Acidity Regulator: Lactic Acid (Non Dairy),
Flavourings,
Olive Extract,
Colour: B-Carotene,
Vitamin B12.

ALLERGENS

Product Contains:

Celery/Celeriac	No
Cereals Containing Gluten	No
Barley	No
Oats	No
Rye	No
Wheat (including Spelt and Khorasan)	No
Crustacea	No
Eggs	No
Fish	No
Lupin	No
Milk	No
Molluscs	No

Mustard	No
Nuts (Tree)	No
Almond nuts	No
Brazil nuts	No
Cashew nuts	No
Hazelnuts	No
Macadamia (Queensland) nuts	No
Pecan nuts	No
Pistachio nuts	No
Walnuts	No
Peanuts	No
Sesame Seeds	No
Soybeans	No
Sulphur Dioxide and Sulphites	No

FREE FROM CLAIMS

Free From Barley	Yes
Free From Celery/Celeriac	Yes
Free From Crustacea	Yes
Free From Eggs	Yes
Free From Fish	Yes
Free From Lactose	Yes
Free From Lupin	Yes
Free From Milk	Yes
Free From Molluscs	Yes

Free From Mustard	Yes
Free From Nuts	Yes
Free From Oats	Yes
Free From Peanuts	Yes
Free From Rye	Yes
Free From Sesame	Yes
Free From Soybeans	Yes
Free From Sulphur Dioxide	Yes
Free From Wheat	Yes

SUPPLEMENTARY INGREDIENT INFORMATION ADDITIVES

GM Protein/DNA	No
----------------	----

Product Contains:

Artificial Preservatives	No
--------------------------	----

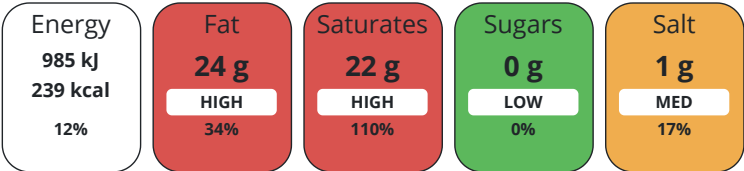
DIET SUITABILITY

Vegan Diet	Suitable for
Halal Diet	No

Vegetarian Diet	Suitable for
Kosher Diet	Suitable for

NUTRITIONAL INFORMATION AS SOLD

Each 100g/ml portion contains:



of your reference intake.

Typical values per 100g/ml : Energy 239kcal / 985kJ

CONFIGURATION	Case Configuration	Inner Pack Configuration
PRODUCT WEIGHTS	Variable Inner Components in Outer Case	Yes
	Inner Component	
	Variable Weight Consumer Item	Yes
	Outer Case	
	Outer Case Gross Weight	0 kg
PRODUCT DIMENSIONS	Outer Case Net Weight	0 kg
	Inner Component	
	Inner Component Depth	0 mm
	Inner Component Width	0 mm
	Inner Component Height	0 mm
PALLET INFORMATION	Outer Case	
	Outer Case Depth	0 mm
	Outer Case Width	0 mm
	Outer Case Height	0 mm
	Non Palletised	Yes
SAFETY & WARNINGS		
OTHER INFORMATION		
CONTACT INFORMATION	Address Longman Cheese Sales Ltd The Offices, North Leaze Farm North Cadbury Yeovil Somerset BA22 7BD England P: (Phone) 01963 441146	Technical Contact Jen Howson QA & Technical Lead Jenhowson@longmancheese.co.uk P: (Phone) 01963441146
	Complaints Contact Jen Howson QA & Technical Lead jenhowson@longmancheese.co.uk P: (Phone) 01963441146	Commercial Contact Chris Slocombe Managing Director chrisslocombe@longmancheese.co.uk P: (Phone) 01963441146

The information on the [Erudus System](#) has been supplied by the manufacturers of the products and, whilst the owners of the Erudus System take steps to ensure the information is regularly updated, they give no warranty and no guarantee that the information is accurate. Product information and ingredients may change, please always read product labels carefully in addition to using the information provided by Erudus.

We do not accept liability for any inaccuracies or incorrect information contained on this site.
 Please visit <http://www.erudus.com/terms-and-conditions> for full terms and conditions.